

MO Project LAUNCH



October 2012 - September 2017

Project LAUNCH is a child wellness promotion grant program of the federal Substance Abuse and Mental Health Services Administration. Through education and awareness efforts, MO Project LAUNCH is charged with connecting and strengthening the supports for parents, pediatricians, educators, social service agencies and child care providers. MO Project LAUNCH works to ensure that children ages 0-8 can thrive in safe, supportive environments and enter school with the social, emotional, cognitive, and physical skills they need to succeed.

SCREENINGS

In the St. Louis area

1,636

social/emotional screenings were completed



REFERRALS

In the St. Louis area

583

children & families were referred for additional services

TRAININGS

Statewide trainings for professionals and community members were provided on various topics

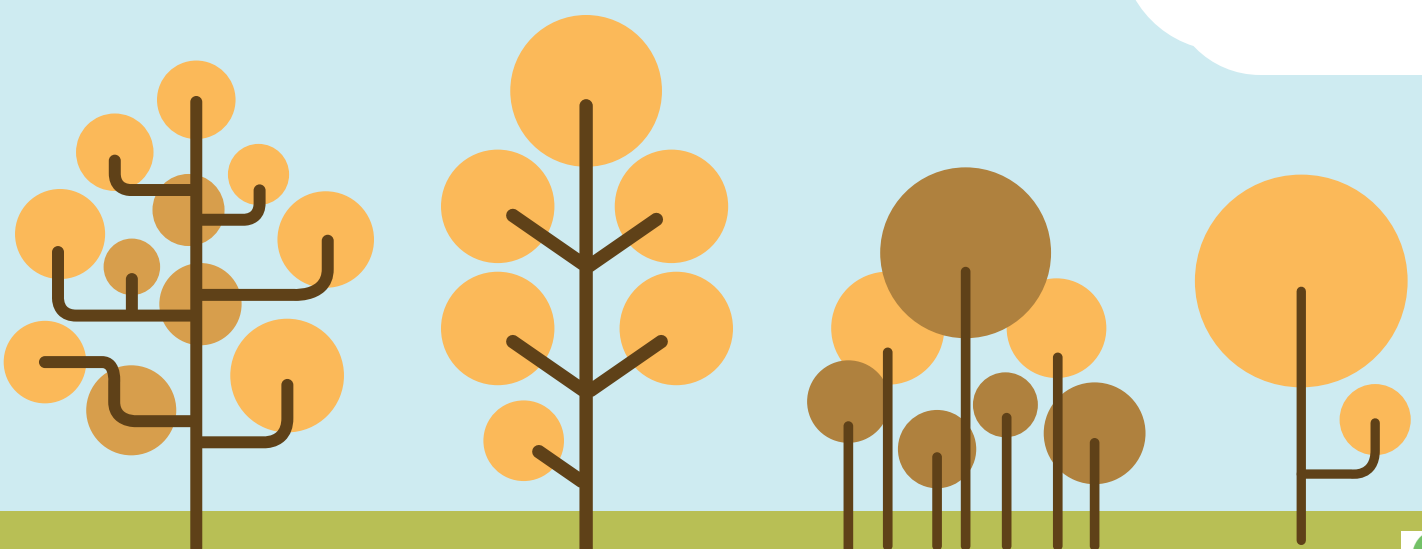
3,689

SERVICES

A variety of services were offered statewide

2,268

services were received by participants




For more information visit <https://dmh.mo.gov/healthykids/projectlaunch/>
Note: These numbers only include those reported in the federally required GPRA system. Not all activities are included in this document. Duplicate counts are represented due to participants potentially benefiting from more than one LAUNCH program.

PROJECT LAUNCH



Numbers Served



October 2012 - September 2017

By partnering with multiple community providers, MO Project LAUNCH was able to support a variety of evidence based services to the community.

CHICAGO PARENT PROGRAM

80 Parents/Family Members

LAUNCH partnered with community providers to offer the Chicago Parent Program to parents/family members in the community. A total of 80 parents/family members attended at least one session.

"You're never too old to learn something new and different, and I am using what I have learned to share it with other parents."

PARENT CAFÉS

896 Parents/Family Members

LAUNCH partnered with statewide agencies to support 25 Parent Cafés series and 896 parents/family members came to at least one Parent Café.

"The more you come, the more like family you become."

SCHOOL-BASED SERVICES

491 Students

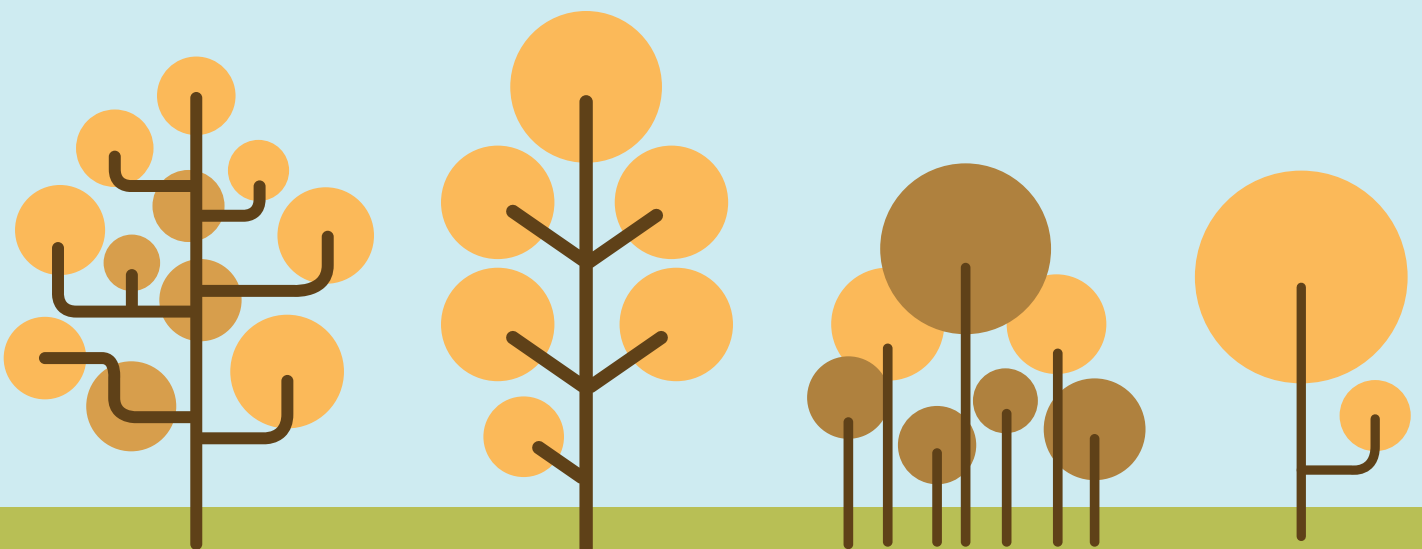
LAUNCH partnered with NCADA to provide substance use prevention programming to elementary schools in the pilot area - 247 students participated in the curriculum.

LAUNCH partnered with a CMHC to provide mental health services in an elementary school - 244 mental health services were provided to students.

CSEFEL CURRICULUM

450 Students

LAUNCH partnered with early childcare providers to provide the CSEFEL curriculum in early childcare settings - 450 students benefited from the program.



Note: These numbers only include those reported in the federally required GPRA system. Not all activities are included in this document.

Duplicate counts are represented due to participants potentially benefiting from more than one LAUNCH program.

