



Children's Division

Child Abuse and Neglect

Calendar Year 2008
Annual Report

Research and Evaluation
August 2009

Child Abuse and Neglect in Missouri

Report for Calendar Year 2008

Missouri Department of Social Services
221 West High Street
P.O. Box 1527
Jefferson City, Missouri 65102-1527

Department of Social Services

Mission Statement

To maintain or improve the quality of life for the people of the state of Missouri by providing the best possible services to the public, with respect, responsiveness and accountability, which will enable individuals and families to better fulfill their potential.

The logo features a large, stylized letter 'S' on the left, composed of three curved, overlapping bands in shades of blue and green. To the right of the 'S', the text 'Missouri Department of Social Services' is written in a small, blue, sans-serif font. Below this, the words 'CHILDREN'S' and 'DIVISION' are written in a large, bold, blue, sans-serif font with a slight gradient and a drop shadow effect.

Missouri Department of Social Services

CHILDREN'S DIVISION

Prevention ● Partnership ● Protection

Working with you in protecting Missouri's children.

Our Vision:

Safety, health and well being for every Missouri child!

Our Mission:

To partner with families, communities and government to protect children from abuse and neglect and assure safety, permanency and well being for Missouri's children.

Our Guiding Principles:

PROTECTION – Children have a right to be safe and live free from abuse and neglect.

PERMANENCY – Children are entitled to enduring, nurturing relationships that provide a sense of family, stability and belonging.

PARTNERSHIP - Families, communities and government share the responsibility to create safe, nurturing environments for families to raise their children - only through working together can better outcomes be achieved.

PRACTICE - The family is the basic building block of society and is irreplaceable. Building on their strengths, families are empowered to identify and access services that support, preserve and strengthen their functioning.

PREVENTION - Families are supported through proactive, intentional activities that promote positive child development and prevent abuse and neglect.

PROFESSIONALISM – Staff are valued, respected and supported throughout their career and in turn provide excellent service that values, respects and supports families.



JEREMIAH W. (JAY) NIXON, GOVERNOR • RONALD J. LEVY, DIRECTOR

PAULA NEESE, DIRECTOR
CHILDREN'S DIVISION

P.O. BOX 88 • JEFFERSON CITY, MO 65103-0088
WWW.DSS.MO.GOV • 573-522-8024 • 573-526-3971 FAX

August 2009

Dear Friends and Colleagues:

Thank you for your interest and concern regarding child abuse and neglect in Missouri. We are pleased to inform you that the Children's Division is implementing a new data system, referred to as Family and Children Electronic System (FACES). This system is meeting federal requirements in Missouri's State Automated Information and Management System. This report illustrates information from our FACES system for all children reported, identified as well as served as a result of abuse and neglect reports or referrals addressed by the Missouri Children's Division. This report includes reports and referrals received during Calendar Year 2008. Additionally, the report includes a description of Missouri's unique, multiple-response system to responding to child abuse and neglect reports. For over ten years, the Children's Division has worked to enhance our family-centered, community-based practice through the use of family assessments.

As evident in this report, there is a continued need for strong community support for Missouri's children and families. Through ongoing support of committed citizens, such as yourself, as well as community partnerships, we believe that our shared desires for the improvement and support of Missouri's children and families will be realized.

Sincerely,

Paula Neese, MA, LCSW
Director

RELAY MISSOURI
FOR HEARING AND SPEECH IMPAIRED
1-800-735-2466 VOICE • 1-800-735-2966 TEXT PHONE

An Equal Opportunity Employer, services provided on a nondiscriminatory basis.

Contents

Introduction	1
Reports to the Child Abuse/Neglect Hotline	1
Definitions	2
Reports and Investigations/Family Assessments	4
Child Abuse/Neglect Investigations/Family Assessments	4
Reporters	8
Substantiated Child Abuse/Neglect	10
Child Demographics	12
Child Abuse/Neglect Fatalities	15
Child Abuse/Neglect Fatality Demographics	17
Perpetrator Information	18
Perpetrator Demographics	18
Child Protection System: Family Assessments/Investigations	20
Child Demographics	23
Prevention/Treatment Services	26
Appendices	31
A. Reported Incidents by Region, County and Conclusion	32
B. Reported Children by Region, County and Conclusion	34
C. Family Assessment Incidents by Region, County and Conclusion	36
D. Family Assessment Children by Region, County and Conclusion	38
E. Substantiated Incidents by Region, County, and Category of Abuse/Neglect	40
F. Substantiated Children by Region, County, and Category of Abuse/Neglect	44
G. Substantiated Child Abuse/Neglect Fatalities by Region and County	48

Introduction

This report compiles data collected by the Missouri Department of Social Services (DSS), Children's Division (CD) in the course of Child Abuse and/or Neglect (CA/N) investigations/assessments. The data is current as of May 2009. As a result of pending investigations or changes in conclusions, the data is prone to change.

Reports to the Child Abuse/Neglect Hotline

Over the past year, the Child Abuse/Neglect Hotline Unit (CANHU) received 50,565 reports of child abuse/neglect, involving 75,781 children. The CANHU is operated year-round on a 24 hours per day, seven days per week basis by 50 trained and experienced Children's Service Workers. Missouri's toll-free number for reporting child abuse/neglect is **1-800-392-3738**.

When a call is received at the CANHU, information is analyzed to determine whether:

- the child is under age 18;
- the alleged perpetrator has care, custody and control of the child; and
- the report meets the legal definition of abuse and/or neglect as stipulated in 210.110, RSMo (see definitions on page 2).

Within moments of receiving a report, the information is forwarded electronically to one of the 114 county offices or the St. Louis City office for investigation/assessment. Investigations/assessments must be initiated within 24 hours or immediately when it is determined that the child is in imminent danger. Exceptions are when the only allegation is educational neglect or the allegation is an old allegation and the child is protected. In this case, an investigation/assessment must be initiated within 72 hours. Children's Service Workers have 30 days to complete their investigations/assessments.

A call to the hotline is referred to as a report or reported incident of child abuse/neglect. A report may involve from one to several children. Compared to 2007, the number of reports decreased in 2008.

**Incidents and Children Reported to the Child Abuse/Neglect Hotline
and Annual Percent Change, 2004-2008**

Year	Total Reports	Annual Change	Total Children	Annual Change
2004	56,111		84,590	
2005	54,108	-3.6%	80,577	-4.7%
2006	51,383	-5.0%	75,474	-6.3%
2007	52,979	3.1%	77,481	2.7%
2008	50,565	-4.6%	75,781	-2.2%

Note: All counts of children are duplicated because a child may be reported more than once during the year.

Introduction

Definitions

Legal:

The Missouri Child Abuse Law, Section 210.110 RSMo defines:

Abuse as any physical injury, sexual abuse, or emotional abuse inflicted on a child other than by accidental means by those responsible for the child's care, custody, and control, except that discipline including spanking, administered in a reasonable manner, shall not be construed to be abuse; and

Neglect as failure to provide, by those responsible for the care, custody, and control of the child, the proper or necessary support, education as required by law, nutrition or medical, surgical, or any other care necessary for the child's well-being.

Care, custody and control of the child, includes but is not limited to the parents or guardian of a child, other members of the child's household, or those exercising supervision over a child for any part of a twenty-four hour day. Those responsible for the care, custody and control shall also include any adult who, based on their relationship to the parents of the child, members of the child's household or the family, has access to the child.

Investigation is the collection of physical and verbal evidence to determine if a child has been abused or neglected.

Family assessment and services is an approach which provides for a prompt assessment of a child and their family when the child has been reported to the CD as a victim of abuse or neglect by a person responsible for that child's care, custody or control. Family assessments include the provision of community-based services to reduce the risk of abuse and neglect and to support the family. This approach takes the place of the traditional investigation.

Operational:

At the end of each child abuse/neglect investigation/assessment, the Children's Service Worker reaches a conclusion. The following are operational definitions for investigative conclusions:

Substantiated: A finding that abuse/neglect has occurred or is occurring as a result of the observation of visible signs, physical and/or credible verbal evidence provided to the Children's Service Worker by the child, perpetrator or witnesses in accordance with the definitions of abuse/neglect. This includes cases which are adjudicated by the courts and those with preponderance of evidence.

Unsubstantiated-Preventive Services Indicated: A finding that insufficient visible signs, physical and/or credible evidence exist, but where the Children's Service Worker determines that indicators are present which, if unresolved, could potentially contribute to child abuse/neglect.

Unsubstantiated: A finding that insufficient physical or credible verbal evidence exists and where few or no indicators are identified and the social worker has not identified a specific threat exists for the child.

The following are definitions for Family Assessment conclusions:

Services Needed: The family has an identified need for services. CD will continue to work with the family after the assessment is completed and will continue providing services for some period of time.

Services Needed-Linked Initial 30 Days: The family has an identified need for community services. The identified services were linked with the family during the 30-day family assessment process. CD will not continue working with the family when the family assessment process is completed. The Children's Service Worker should contact referral providers to verify that the family is receiving services.

Introduction

Services Needed-Family Declined: The Children's Service Worker has identified a service that may be beneficial to the family; however, the family declined to receive the services. The child's safety has been assessed, and there is no evidence that warrants court intervention.

Services Not Needed: The family does not have an identified need for additional services. Families may be receiving services prior to the date of the hotline. Services Not Needed is used only when the family does not have additional service needs.

Non-cooperative/Child Safe: Enough information has been obtained to ensure that the child is safe; however, the family refuses to participate in the family assessment process and the allegations do not warrant a co-investigation with law enforcement or court involvement.

For a small number of reports, the above definitions are not applicable. Other conclusions for either investigations or assessments include **Unable to Locate, Inappropriate Report, Located Out of State, Home Schooling, and School Investigation by School Board (Substantiated, Unsubstantiated, Unresolved)**.

Methodological:

The following are technical definitions used in the computations of the statistics throughout this report:

Reported incident: An allegation of child abuse/neglect made to the hotline which meets the legal definitions for abuse/neglect and for care, custody, and control. A reported incident may involve more than one child and more than one alleged perpetrator. The terms "report," "incident" and "reported incident" are used interchangeably throughout this report.

Incident conclusion: The Children's Service Worker assigns a conclusion for each child and for each alleged perpetrator involved in an incident. If at least one child is substantiated, the incident is considered to be substantiated.

Incident category of abuse/neglect: Up to fifty findings of abuse/neglect can be assigned to each substantiated child. Each incident may have up to six categories of abuse/neglect because each child may be substantiated for different types of abuse/neglect. For incidents involving more than one child, each category of abuse/neglect is counted once if at least one child was substantiated for that category.

Reported child: A child named in a reported incident of child abuse/neglect. A child may be reported more than one time during the year, and unless otherwise indicated, counts of children are duplicated in this report.

Child conclusion: The Children's Service Worker assigns a conclusion for each child involved in an incident. For example, some children in the report may be substantiated while others may be unsubstantiated.

Child category of abuse/neglect: Each substantiated child may be assigned up to six categories of abuse/neglect.

Alleged perpetrator: A person named as the perpetrator in a reported incident of child abuse/neglect. An alleged perpetrator may be involved in more than one incident during the year. Unless otherwise indicated, counts of alleged perpetrators are duplicated in this report.

Alleged perpetrator conclusion: The Children's Service Worker assigns a conclusion to each alleged perpetrator involved in an incident. One perpetrator in a report may be substantiated while another may be unsubstantiated.

Reports and Investigations/Family Assessments

Child Abuse/Neglect Investigations/Family Assessments

Children's Service Workers investigate/assess each report to determine if abuse/neglect is occurring or has occurred and evaluate the family's need for services. Thorough investigations/assessments require hours of interviews and information collection, and usually include the major steps listed below:

- Contacting the reporter, if known, for additional information before proceeding with the investigation;
- Contacting appropriate law enforcement personnel or multidisciplinary team members to request a co-investigation if the alleged report, if true, would constitute a violation of the law;
- Making a determination regarding the safety of the children within 24 hours, or immediately, if deemed as an emergency;
- Contacting the School District Liaison when the victim in the child abuse/neglect report is school-aged;
- Determining the safety of all other children in the household within 72 hours;
- Consulting with the Chief Investigator within 72 hours;
- Contacting collateral persons;
- Interviewing witnesses;
- Interviewing the non-offending parent;
- Interviewing the alleged perpetrator(s);
- Evaluating and documenting all information collected and observed;
- Determining whether abuse/neglect has occurred or is occurring;
- Evaluating the family's need for services and making appropriate referrals for needed services; and
- Notifying the child's parent(s), alleged perpetrator, School District Liaison and if applicable, the Mandated reporter of the report conclusion and related findings.

CD policy requires completion of investigations/assessments within 30 days. When the Children's Service Worker determines that there is reasonable cause to believe that abuse/neglect has occurred, or is occurring, the family is advised of available services. The family also is offered services when the investigative conclusion is Unsubstantiated-Preventive Services Indicated or when a Family Assessment indicates the need for services.

Reports and Investigations/Family Assessments

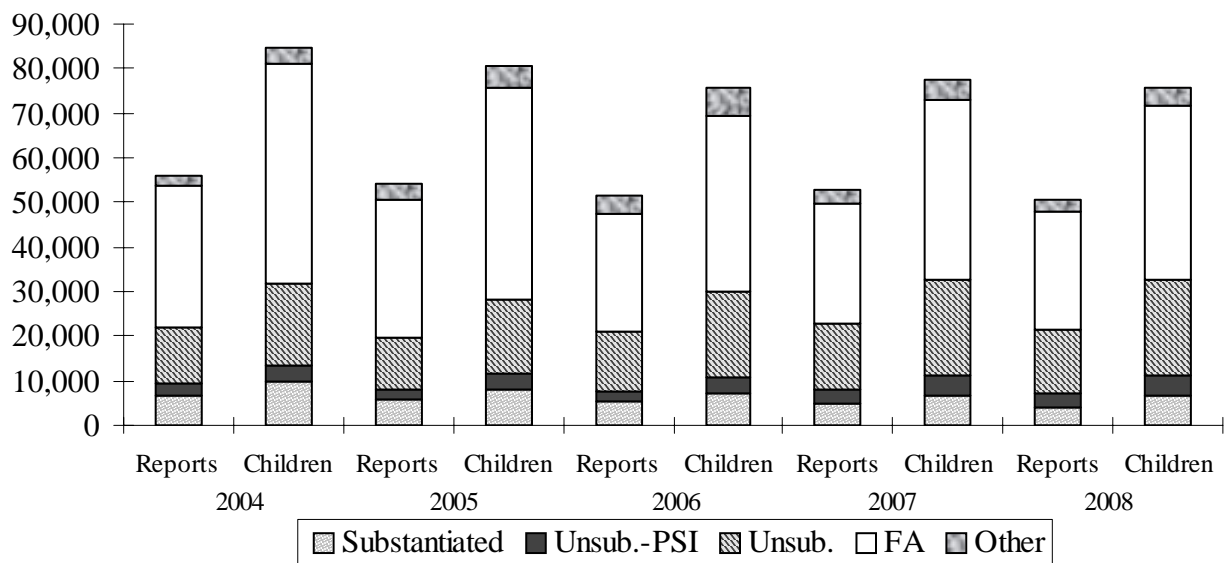
Reported Incidents by Conclusion, 2004 - 2008

	Substantiated		Unsubstantiated-PSI		Unsubstantiated		Family Assessment		Other		Total
	Number	Percent	Number	Percent	Number	Percent	Number	Percent	Number	Percent	
2004	6,820	12.2%	2,675	4.8%	12,529	22.3%	31,673	56.4%	2,414	4.3%	56,111
2005	5,812	10.7%	2,408	4.5%	11,355	21.0%	31,099	57.5%	3,434	6.3%	54,108
2006	5,283	10.3%	2,428	4.7%	13,389	26.1%	26,313	51.2%	3,970	7.7%	51,383
2007	4,803	9.1%	3,083	5.8%	14,964	28.2%	26,886	50.7%	3,243	6.1%	52,979
2008	4,131	8.2%	2,961	5.9%	14,497	28.7%	26,144	51.7%	2,832	5.6%	50,565

Reported Children by Conclusion, 2004 - 2008

	Substantiated		Unsubstantiated-PSI		Unsubstantiated		Family Assessment		Other		Total
	Number	Percent	Number	Percent	Number	Percent	Number	Percent	Number	Percent	
2004	9,643	11.4%	3,910	4.6%	18,333	21.7%	49,139	58.1%	3,565	4.2%	84,590
2005	8,158	10.1%	3,571	4.4%	16,350	20.3%	47,379	58.8%	5,119	6.4%	80,577
2006	7,222	9.6%	3,443	4.6%	19,545	25.9%	39,154	51.9%	6,110	8.1%	75,474
2007	6,576	8.5%	4,457	5.8%	21,853	28.2%	39,877	51.5%	4,718	6.1%	77,481
2008	6,732	8.9%	4,478	5.9%	21,413	28.3%	38,896	51.3%	4,262	5.6%	75,781

Reported Incidents and Children by Conclusion, 2004 - 2008



Conclusions are as follows: Substantiated - Court Adjudicated and Preponderance of Evidence; Unsub.-PSI - Unsubstantiated-Preventive Services Indicated; Unsub. - Unsubstantiated; FA - Family Assessment: Services Needed, Services Not Needed, Non-cooperative/Child Safe, Services Needed-Linked Initial 30 Days, and Services Needed-Family Declined; Other - Unable to Locate, Inappropriate Report, Located Out of State, and Home Schooling

Reports and Investigations/Family Assessments

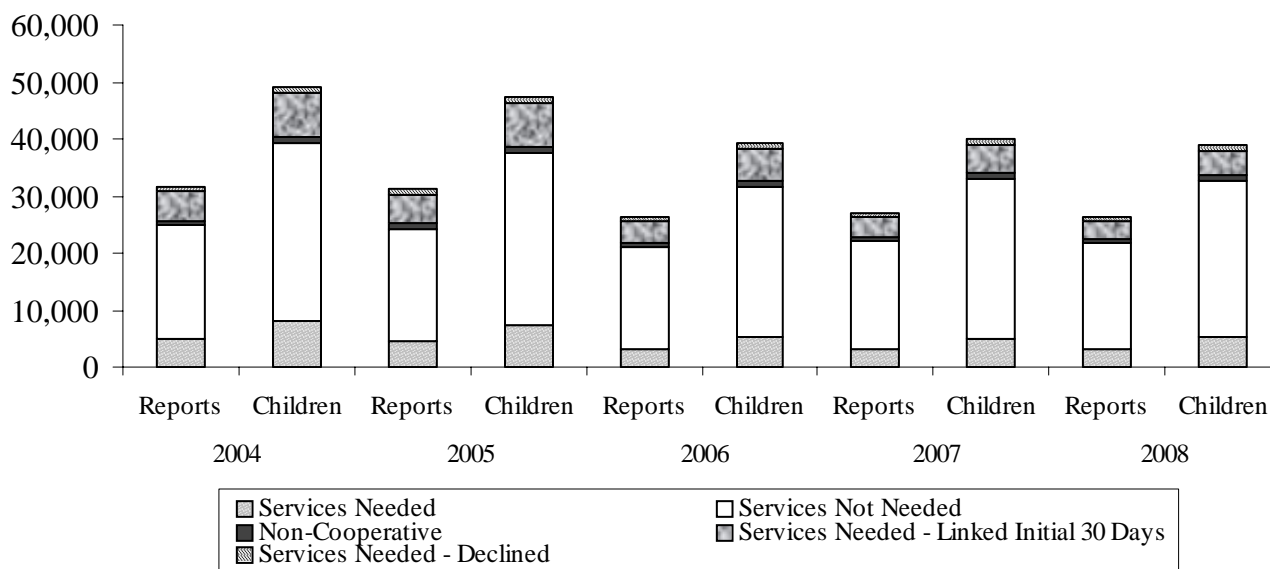
Reported Incidents by FA Conclusion, 2004 - 2008

	Services Needed		Services Not Needed		Non-Cooperative		Services Needed - Linked Initial 30 Days		Services Needed - Declined		Total
	Number	Percent	Number	Percent	Number	Percent	Number	Percent	Number	Percent	
2004	4,834	15.3%	20,031	63.2%	883	2.8%	5,148	16.3%	777	2.5%	31,673
2005	4,734	15.2%	19,646	63.2%	814	2.6%	5,106	16.4%	799	2.6%	31,099
2006	3,249	12.3%	17,800	67.6%	757	2.9%	3,932	14.9%	575	2.2%	26,313
2007	3,274	12.2%	18,790	69.9%	686	2.6%	3,529	13.1%	607	2.3%	26,886
2008	3,306	12.6%	18,546	70.9%	613	2.3%	3,095	11.8%	584	2.2%	26,144

Reported Children by FA Conclusion, 2004 - 2008

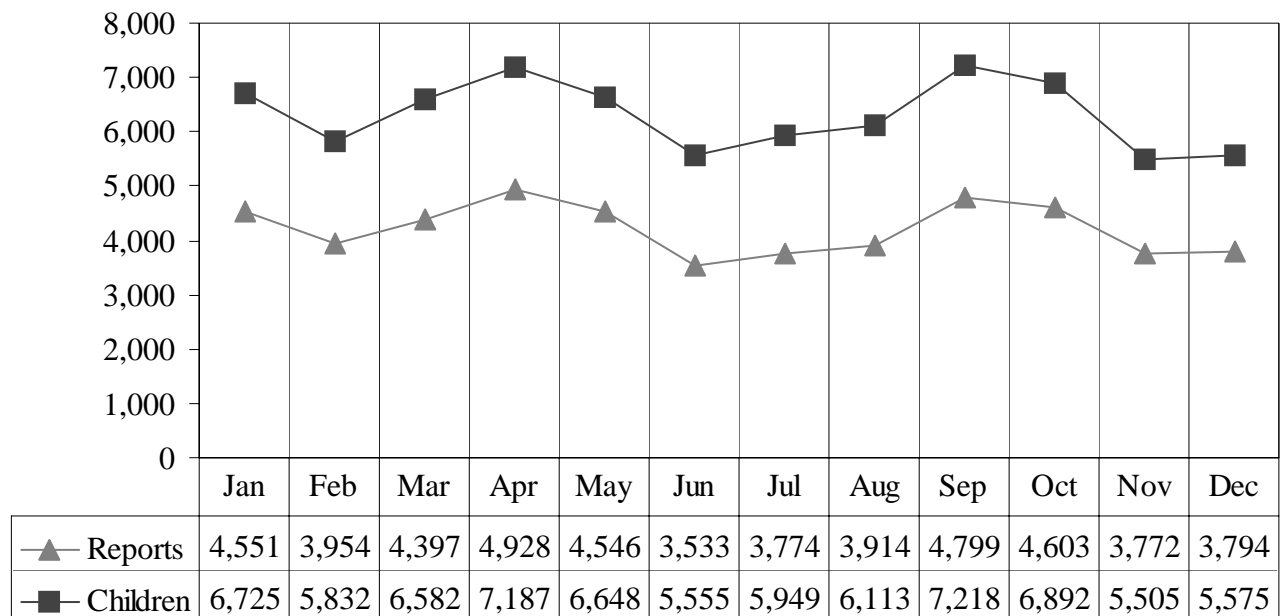
	Services Needed		Services Not Needed		Non-Cooperative		Services Needed - Linked Initial 30 Days		Services Needed - Declined		Total
	Number	Percent	Number	Percent	Number	Percent	Number	Percent	Number	Percent	
2004	8,138	16.6%	30,996	63.1%	1,309	2.7%	7,485	15.2%	1,211	2.5%	49,139
2005	7,517	15.9%	29,926	63.2%	1,222	2.6%	7,483	15.8%	1,231	2.6%	47,379
2006	5,098	13.0%	26,456	67.6%	1,070	2.7%	5,619	14.4%	911	2.3%	39,154
2007	5,040	12.6%	27,834	69.8%	999	2.5%	5,044	12.6%	960	2.4%	39,877
2008	5,320	13.7%	27,364	70.4%	869	2.2%	4,447	11.4%	896	2.3%	38,896

Reported Incidents and Children by FA Conclusion, 2004 - 2008



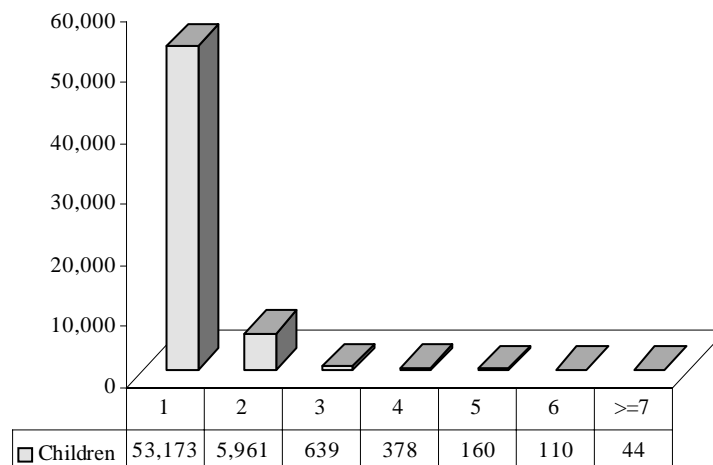
Reports and Investigations/Family Assessments

2008 Child Abuse/Neglect Reports and Children by Month of Report



During 2008, the month with the most reports was April with 4,928 reports (7,187 children). June had the fewest number of reports and children with 3,533 and 5,555, respectively.

2008 Child Abuse/Neglect Children by Number of Incidents Reported in the Same Year



In 2008, a duplicated number of 75,781 children were reported. Unduplicated this number reduces to 60,465 children. Of those children, 53,173 had one report during the year. The remaining 7,292 children had more than one report during 2008.

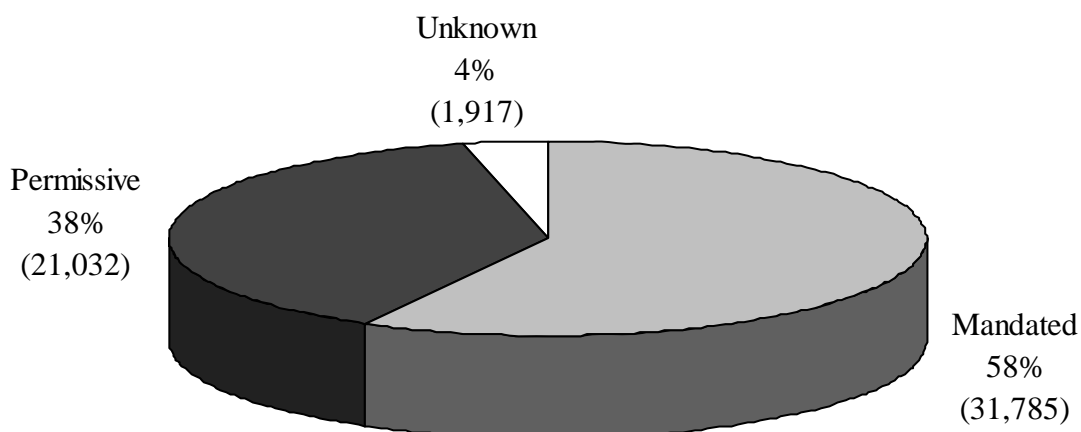
Reports and Investigations/Family Assessments

Reporters

Reports of child abuse/neglect can be made by persons who are either "mandated" or "permissive" reporters. Mandated reporters are required by state statute to report abuse/neglect when they have reasonable cause to suspect a child has been or is being abused. Mandated reporters include health and education professionals, social workers and foster parents, among others. Permissive reporters are those people not required to report suspected abuse/neglect, such as relatives or neighbors. Effective August 28, 2003, Christian Science practitioners were added to the definition of ministers with regard to the individuals required to report incidents of suspected child abuse/neglect. Minister is defined as "any person while practicing as a minister of the gospel, clergy person, priest, rabbi, Christian Science practitioner, or other person serving in a similar capacity for any religious organization who is responsible for or who has supervisory authority over one who is responsible for the care, custody, and control of a child or has access to a child", section 352.400, RSMo.

Fifty-eight percent (58%) of the reports made in 2008 were made by mandated reporters and thirty-eight percent (38%) were made by permissive reporters.

Child Abuse/Neglect Reporters by Type of Reporter, 2008



RSMo 210.115. Reports of abuse or neglect, who shall make. – When any physician, medical examiner, coroner, dentist, chiropractor, optometrist, podiatrist, resident, intern, nurse, hospital or clinic personnel that are engaged in the examination, care, treatment, or research of persons, and any other health practitioner, psychologist, mental health professional, social worker, day care center worker or other child care worker, juvenile officer, probation or parole officer, jail or detention center personnel, teacher, principal or other school official, minister as provided by section 352.400, RSMo, peace officer or law enforcement official, or other person with responsibility for the care of children, has reasonable cause to suspect that a child has been or may be subjected to abuse or neglect or observes a child being subjected to conditions or circumstances which would reasonably result in abuse or neglect, that person shall immediately report or cause a report to be made to the division in accordance with the provisions of sections 210.109 to 210.183.

Reports and Investigations/Family Assessments

The most common mandated reporter occupation was school official, followed by social worker and law enforcement officers.

Reporters of Child Abuse/Neglect by Occupation, 2008

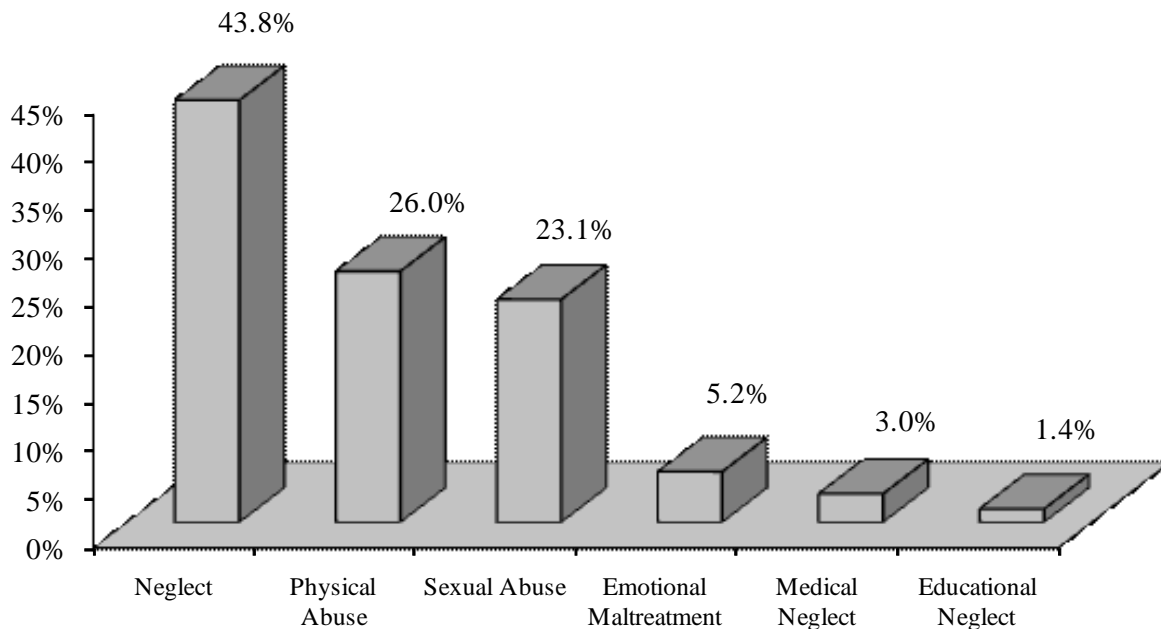
	Number	Percent
Permissive	21,032	38.4%
Principal or other school official	7,412	13.5%
Social worker	6,925	12.7%
Peace officer or law enforcement official	6,484	11.8%
Nurse	2,745	5.0%
Mental health professional	2,274	4.2%
Unknown	1,917	3.5%
Other person with responsibility for care of children	1,496	2.7%
Teacher	1,196	2.2%
Juvenile officer	797	1.5%
Physician	726	1.3%
Day care center or other child care worker	628	1.1%
Psychologist	324	0.6%
Other hospital/clinic personnel	192	0.4%
Other health practitioner	156	0.3%
Foster parents	124	0.2%
Probation or parole officer	96	0.2%
Medical examiner	53	0.1%
Minister	53	0.1%
Intern	41	0.1%
Dentist/Dental hygienist	22	0.0%
Coroner	18	0.0%
Jail or detention personnel	17	0.0%
Resident	5	0.0%
Chiropractor	1	0.0%
Optometrist	0	0.0%

Note: Reporters exceed reports because more than one person may report an incident.

Substantiated Child Abuse/Neglect

During the year, 6,732 children were involved in incidents that were substantiated for abuse or neglect. When a Children's Service Worker determines there is reasonable cause that abuse/neglect has occurred, each child can be assigned up to six categories of abuse/neglect. As the graph below indicates, the most prevalent category is neglect followed by physical abuse and sexual abuse.

Substantiated Children by Category of Abuse/Neglect, 2008



Substantiated Children by Category of Abuse/Neglect, 2008

	Number	Percent
Neglect	2,947	43.8%
Physical Abuse	1,752	26.0%
Sexual Abuse	1,556	23.1%
Emotional Maltreatment	353	5.2%
Medical Neglect	199	3.0%
Educational Neglect	93	1.4%

Percent is the percentage of total substantiated children. Percent total is greater than 100 because a child may be substantiated for up to six categories of abuse/neglect.

Substantiated Child Abuse/Neglect

Information gathered during an investigation of child abuse/neglect can help identify factors which place a child at risk for abuse/neglect. In addition to establishing an investigative conclusion for each child, Children's Service Workers may designate up to four **Observed Family Characteristics** for each reported incident. For families where abuse/neglect is found, these characteristics may indicate which services could help prevent the reoccurrence of abuse/neglect. It is important to note that these are not absolute counts. For instance, a problem with alcohol or other drugs may be difficult to detect during the course of an investigation.

The family characteristics reported in 2008 are similar to those reported during the last five years. Fifty-one percent (51%) of the families involved in substantiated incidents had adequate living conditions. Forty-two percent (42%) of the substantiated incidents involved families that were amenable to services. The top twenty family characteristics are listed below.

Characteristics of Families Involved in Substantiated Incidents, 2008

	Number	Percent
Adequate living conditions	2,089	50.6%
Amenable to services	1,720	41.6%
Extended family support system	1,583	38.3%
Lack of parenting skills	1,172	28.4%
Single parent household	1,107	26.8%
Community/cultural support	722	17.5%
Appropriate parenting skills	591	14.3%
Other drug-related problem(s)	504	12.2%
Domestic violence	451	10.9%
Heavy continuous child care responsibility	395	9.6%
Appropriate child development knowledge	373	9.0%
Insufficient/misuse of income	332	8.0%
Dangerous living conditions	324	7.8%
Recent/frequent relocation	320	7.7%
Alcohol-related problem(s)	278	6.7%
Crowded living conditions	276	6.7%
Recent loss/addition to household members	274	6.6%
New baby in home/pregnancy	261	6.3%
Marital problems	240	5.8%
Loss of employment	234	5.7%

Percent is the percentage of total substantiated incidents. Percent total is greater than 100 because up to four family characteristics may be reported for each incident.

Substantiated Child Abuse/Neglect

Child Demographics

Child Abuse/Neglect Children, 2008

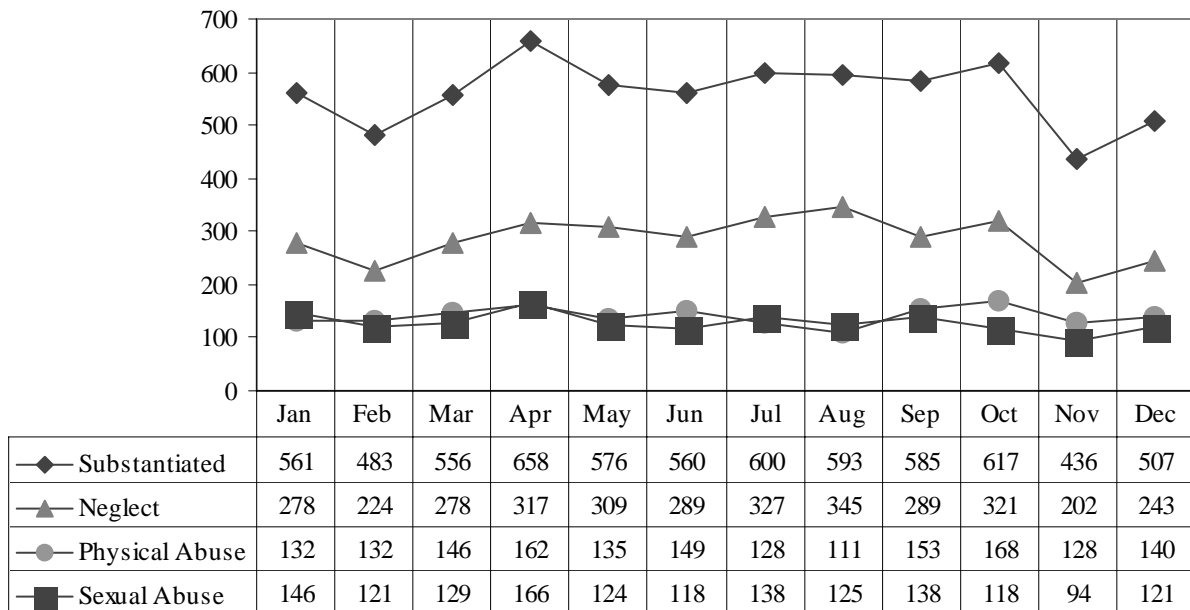
Age	Substantiated		Neglect		Physical Abuse		Sexual Abuse	
	Number	Percent	Number	Percent	Number	Percent	Number	Percent
< 1	498	7.4%	318	9.3%	170	10.1%	4	0.3%
1	432	6.4%	331	9.7%	91	5.4%	8	0.5%
2	460	6.8%	350	10.2%	92	5.5%	11	0.7%
3	405	6.0%	282	8.2%	71	4.2%	45	2.9%
4	405	6.0%	244	7.1%	93	5.5%	59	3.8%
5	420	6.2%	215	6.3%	106	6.3%	92	6.0%
6	395	5.9%	208	6.1%	107	6.4%	75	4.9%
7	386	5.7%	180	5.3%	107	6.4%	93	6.0%
8	376	5.6%	172	5.0%	87	5.2%	113	7.3%
9	291	4.3%	138	4.0%	54	3.2%	94	6.1%
10	334	5.0%	138	4.0%	82	4.9%	106	6.9%
11	326	4.8%	147	4.3%	81	4.8%	93	6.0%
12	293	4.4%	122	3.6%	65	3.9%	101	6.6%
13	374	5.6%	135	3.9%	99	5.9%	136	8.8%
14	419	6.2%	141	4.1%	117	6.9%	160	10.4%
15	407	6.0%	127	3.7%	119	7.1%	157	10.2%
16	358	5.3%	123	3.6%	102	6.1%	132	8.6%
17	144	2.1%	47	1.4%	38	2.3%	57	3.7%
Unknown	9	0.1%	4	0.1%	3	0.2%	2	0.1%
Total	6,732	100.0%	3,422	100.0%	1,684	100.0%	1,538	100.0%
Sex								
Male	2,939	43.7%	1,721	50.3%	898	53.3%	274	17.8%
Female	3,791	56.3%	1,701	49.7%	785	46.6%	1,263	82.1%
Unknown	2	0.0%	0	0.0%	1	0.1%	1	0.1%
Total	6,732	100.0%	3,422	100.0%	1,684	100.0%	1,538	100.0%
Race								
White	5,288	78.6%	2,734	79.9%	1,246	74.0%	1,239	80.6%
Black	1,262	18.7%	605	17.7%	386	22.9%	255	16.6%
Asian	20	0.3%	8	0.2%	5	0.3%	7	0.5%
Native American	17	0.3%	6	0.2%	7	0.4%	4	0.3%
Other	61	0.9%	39	1.1%	9	0.5%	11	0.7%
Unknown	84	1.2%	30	0.9%	31	1.8%	22	1.4%
Total	6,732	100.0%	3,422	100.0%	1,684	100.0%	1,538	100.0%

In 2008, forty-four percent (44%) of the substantiated children were male, and fifty-six percent (56%) were female. Unlike neglected and physically abused children, where a majority were male, the majority of sexually abused children were female.

Approximately three-fourths of the substantiated children were white and one-fifth were black. The majority of neglected, physically abused, and sexually abused victims were white followed by black victims.

Substantiated Child Abuse/Neglect

Child Abuse/Neglect Children by Month of Report, 2008



Most substantiated incidents were reported in April with 658 children. The lowest number of substantiated children (436) were reported in November. The highest incidence of neglect, physical abuse, and sexual abuse occurred in August (345), October (168), and April (166) children, respectively. The lowest occurrences of neglect, physical abuse, and sexual abuse were in November, August and November with 202, 111, and 94, respectively.

In addition to assigning categories of abuse or neglect, a Children's Service Worker may also describe up to fifty specific findings of abuse. For neglected children the most frequent worker descriptions are those typically associated with neglect, such as a lack of supervision and unsanitary living conditions. The ten most frequently reported worker findings for neglected children are listed below.

Worker Findings for Neglected Children, 2008

	Number	Percent
Lack of supervision	1,529	54.3%
Unsanitary living conditions	709	25.2%
Unsafe/inadequate shelter	646	22.9%
Failure to protect	409	14.5%
Blaming, verbal abuse, threatening	190	6.7%
Lack of food	162	5.7%
Poor hygiene (health threatening)	149	5.3%
Untreated illness/injury	142	5.0%
Rejection through indifference	92	3.3%
Methamphetamine lab exposure	90	3.2%

Percent is the percentage of total neglected children. Percent total is greater than 100 because a worker may list up to fifty specific findings for each child.

Substantiated Child Abuse/Neglect

For physically abused children, the most frequently reported worker findings were bruises, welts or red marks and other physical abuse or injury. Lack of supervision is also cited quite frequently, suggesting that neglect may occur in some abusive situations. The ten most often reported worker findings for physically abused children are listed below.

Worker Findings for Physically Abused Children, 2008

	Number	Percent
Bruises, welts, red marks	892	53.0%
Other physical abuse or injury	292	17.3%
Abrasions, lacerations	164	9.7%
Other	88	5.2%
Inappropriately giving drugs	81	4.8%
Unsafe/inadequate shelter	73	4.3%
Fractures (Other than Skull)	65	3.9%
Lack of supervision	61	3.6%
Methamphetamine lab exposure	52	3.1%
Wounds, cuts, punctures	43	2.6%

Percent is the percentage of all physically abused children. Percent total is greater than 100 because a worker may list up to fifty specific findings for each child.

For sexually abused children, the most frequently reported worker finding was fondling or touching followed by other sexual abuse. The ten most often reported worker findings for sexually abused children are listed below.

Worker Findings for Sexually Abused Children, 2008

	Number	Percent
Fondling/touching	937	60.9%
Other sexual abuse	449	29.2%
Oral sex, sodomy	367	23.9%
Intercourse	312	20.3%
Digital penetration	266	17.3%
Pornography	67	4.4%
Inappropriately giving drugs	35	2.3%
Failure to protect	24	1.6%
Verbal abuse	17	1.1%
Lack of supervision	16	1.0%

Percent is the percentage of all sexually abused children. Percent total is greater than 100 because a worker may list up to fifty specific findings for each child.

Substantiated Child Abuse/Neglect

Child Abuse/Neglect Fatalities

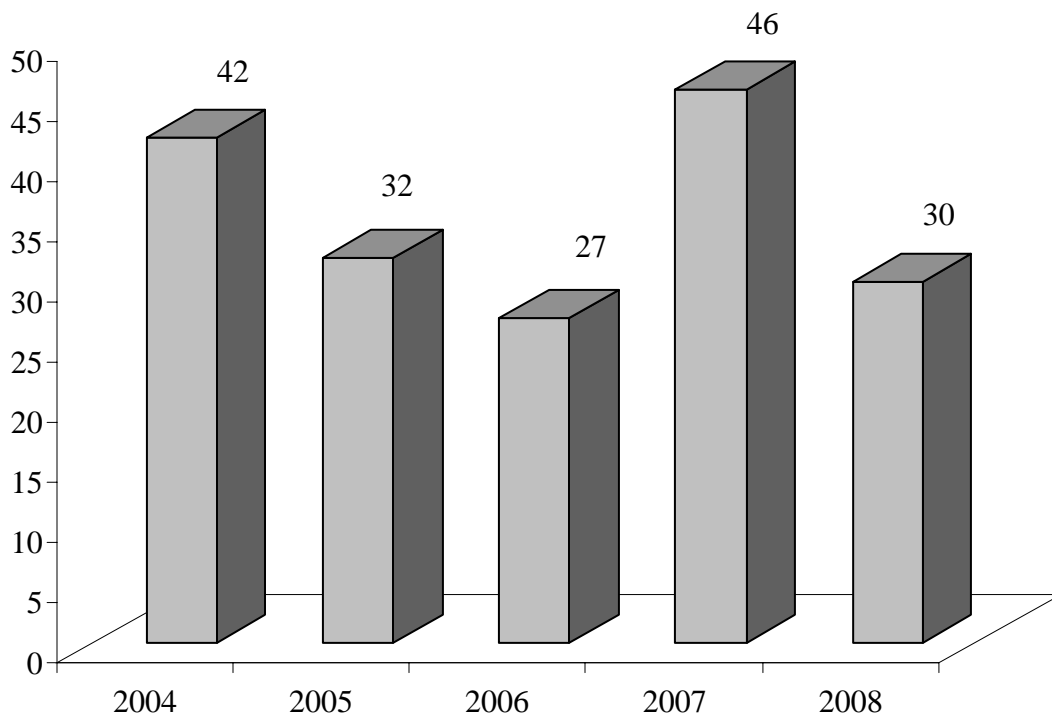
The number of substantiated fatalities in 2008 decreased compared to 2007. Thirty children died as a result of child abuse/neglect in 2008, compared to forty-six in 2007.

These figures only represent children whose deaths are brought to the attention of CD. Recent media attention, both on a state and national level, has focused on children whose deaths were never brought to the attention of the proper authorities despite the suspicious nature of their deaths. When fatal child abuse goes undetected, other children in the home and community remain at risk.

Effective August 28, 2000, if the medical examiner or coroner determines that the child died of natural causes while under medical care for an established natural disease, the coroner, medical examiner, or physician shall notify the division of the child's death. In all other cases, the medical examiner or coroner shall accept the report for investigation, shall immediately notify the division of the child's death as required under section 58.452, RSMo, and shall report the findings to the child fatality review panel established pursuant to section 210.192, RSMo.

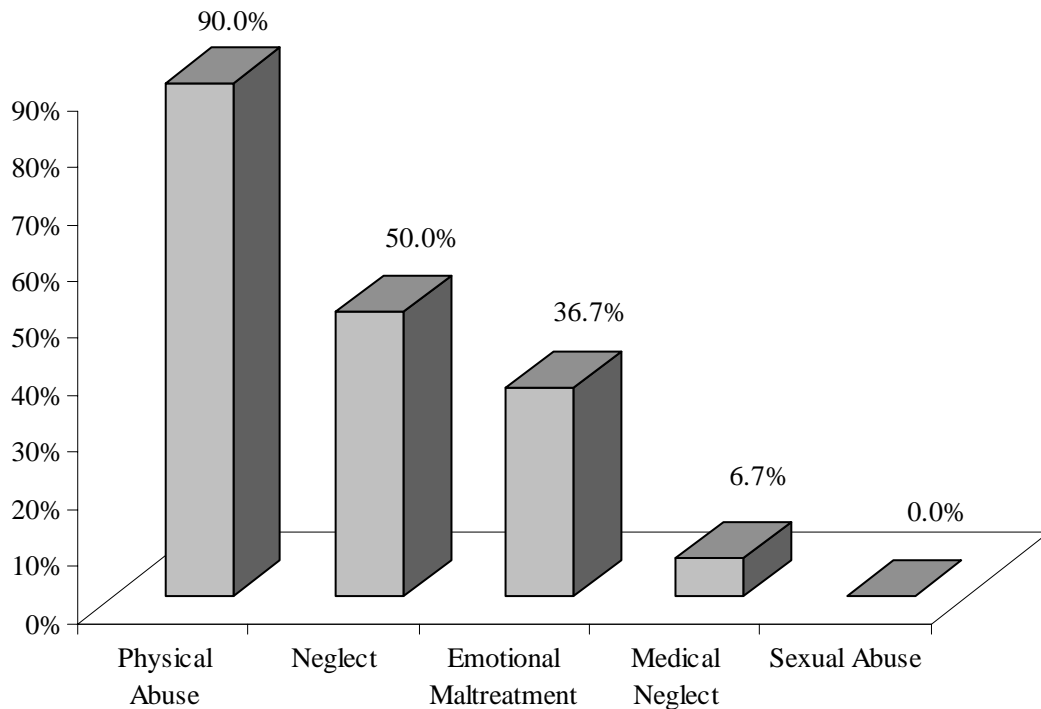
The number of fatalities reported during any given year may change as a result of pending investigations, changes in conclusions, and deaths not reported in a timely manner.

Substantiated Fatalities, 2004 - 2008



Substantiated Child Abuse/Neglect

Substantiated Fatalities by Category of Abuse/Neglect, 2008



A majority, ninety percent (90%), of the CA/N fatalities were caused, at least in part, by physical abuse. Neglect was present in fifty percent (50%) of the CA/N fatalities. Emotional maltreatment, medical neglect, and sexual abuse also contributed to some child fatalities.

Substantiated Fatalities by Category of Abuse/Neglect, 2008

	Number	Percent
Physical Abuse	27	90.0%
Neglect	15	50.0%
Emotional Maltreatment	11	36.7%
Medical Neglect	2	6.7%
Sexual Abuse	0	0.0%

Percent is the percentage of total substantiated fatalities. Percent total is greater than 100 because a child may be substantiated for up to six categories of abuse/neglect.

Substantiated Child Abuse/Neglect

Child Demographics

Substantiated Fatalities, 2008

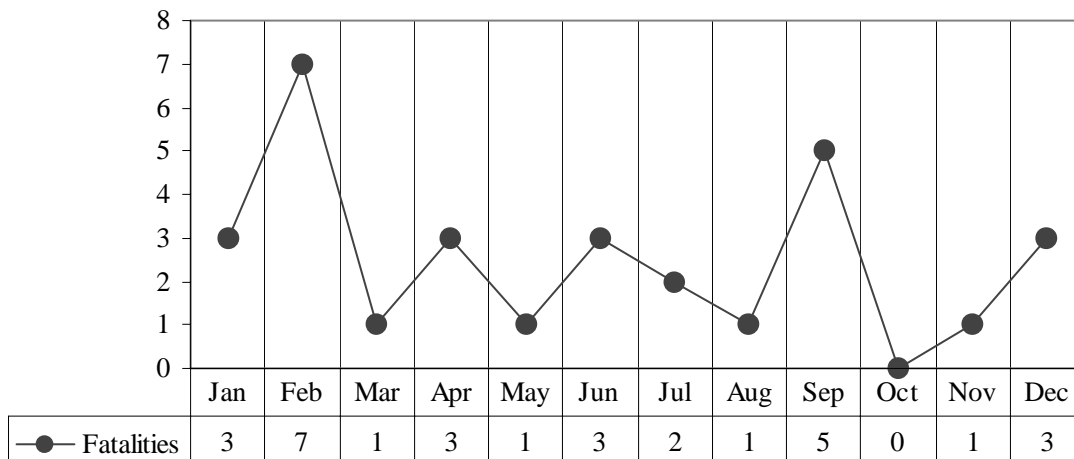
Age	Number	Percent
< 1	12	40.0%
1	3	10.0%
2	7	23.3%
3	1	3.3%
4	1	3.3%
5	1	3.3%
6	1	3.3%
7	2	6.7%
8	1	3.3%
9	0	0.0%
10	0	0.0%
11	0	0.0%
12	0	0.0%
13	0	0.0%
14	1	3.3%
15	0	0.0%
16	0	0.0%
17	0	0.0%
Total	30	100.0%

Sex	Number	Percent
Male	16	53.3%
Female	14	46.7%
Total	30	100.0%

Race	Number	Percent
White	16	53.3%
Black	10	33.3%
American Indian	1	3.3%
Multi-Racial	1	3.3%
Unknown	2	6.7%
Total	30	100.0%

Of the 30 children involved in substantiated fatalities in 2008, the majority were under five years of age. Fifty-three percent (53%) of the children were male and forty-seven percent (47%) were female. Fifty-three percent (53%) of the children were white and thirty-three percent (33%) were black.

Substantiated Fatalities by Month of Death, 2008



The highest incidence of child deaths (7) occurred in February. There were no fatalities in October.

Perpetrator Information

Perpetrator Demographics

Substantiated Perpetrators, 2008

Age	Number	Percent	Race	Number	Percent	Sex	Number	Percent
<20	468	8.0%	White	4147	71.1%	Female	2483	42.6%
20-29	1851	31.8%	Black	1177	20.2%	Male	3255	55.8%
30-39	1735	29.8%	Hispanic	132	2.3%	Unknown	91	1.6%
40-49	976	16.7%	Native American	34	0.6%	Total	5,829	100.0%
50-59	312	5.4%	Asian	19	0.3%			
60-69	84	1.4%	Other	4	0.1%			
70+	32	0.5%	Unknown	316	5.4%			
Unknown	371	6.4%	Total	5,829	100.0%			
Total	5,829	100.0%						

The majority sixty-two (62%) of all perpetrators were between 20 and 39 years of age. Fifty-six percent (56%) were male and forty-three (43%) were female. The race of substantiated perpetrators is similar to that of substantiated children. Seventy-one percent (71%) were white and twenty percent (20%) were black.

The most common type of alleged perpetrator was the natural parent of the child.

Alleged Perpetrators and Substantiated Perpetrators by Relationship to Child, 2008

	Alleged Perpetrators	Substantiated Perpetrators	Percent Found Substantiated
Natural parent	63,159	4,152	6.6%
Parent's paramour	7,292	643	8.8%
Stepparent	5,493	442	8.0%
Unknown	4,673	249	5.3%
Grandparent	3,776	296	7.8%
Other	3,067	646	21.1%
Other relative	2,560	403	15.7%
Adoptive parent	1,233	69	5.6%
Child care provider	1,021	82	8.0%
Sibling	918	102	11.1%
School personnel	802	33	4.1%
Institutional staff	624	30	4.8%
Foster parent	604	21	3.5%
Spouse/paramour	136	29	21.3%
Self	52	3	5.8%
	95,410	7,200	7.5%

Note: A perpetrator may be involved in more than one incident during the report year.

Perpetrator Information

Children's Service Workers may indicate up to four **Observed Perpetrator Characteristics** for each substantiated perpetrator of child abuse/neglect. These characteristics are used to assist in determining which services may be beneficial to a family. For instance, if perpetrators have unrealistic expectations of children, providing information on child development can help teach more appropriate disciplinary techniques.

In 2008, the most prevalent perpetrator characteristic was having an adequate support system, which was the case for approximately twenty percent (20%) of the substantiated perpetrators. Social workers described twenty percent (20%) of the perpetrators as being amenable to services.

Characteristics of Substantiated Perpetrators, 2008

	Number	Percent
Adequate support system	1,150	19.7%
Amenable to services	1,134	19.5%
History of criminal activity	1,186	20.3%
No apparent mental/emotional disturbance	887	15.2%
Unemployed	866	14.9%
Unrealistic expectations of child	853	14.6%
Other drug-related problem(s)	786	13.5%
Mental/emotional disturbance	778	13.3%
Immaturity	763	13.1%
Loss of control during discipline	607	10.4%
Alcohol-related problem(s)	485	8.3%
Low self-esteem	390	6.7%
Pattern of violent behavior	372	6.4%
Parental history of abuse/neglect as a child	305	5.2%
Undetermined	268	4.6%
High school education or higher	235	4.0%
No one to call on in time of crisis	188	3.2%
Less than high school education	183	3.1%
Other	182	3.1%
Institutional report/unknown perpetrator	86	1.5%
Illness	70	1.2%
Incapacity due to physical handicap	33	0.6%
Mental retardation	30	0.5%

Percent is the percentage of total substantiated perpetrators. Percent total is greater than 100 because a worker may list up to four characteristics for each perpetrator.

Child Protection System: Family Assessments/Investigations

Missouri's Child Protection Services system culminated from a collaborative effort between the Children's Division (CD), elective officials, community organizations and private citizens. Senate Bill 595 (SB 595) was signed into law in 1994 and expanded statewide in 1998. The primary focus of SB 595 is to protect children from abuse/neglect in the least disruptive and intrusive way, that recognizes the value of the family. In addition, the protection is provided in the most efficient and effective manner possible within the framework of state, community, and family resources.

The definition of child abuse/neglect and the criteria for reporting (including mandated reporting) remain the same. The most significant change to the Child Protection Services system is how the division responds to reports of child abuse or neglect. When a local county office receives a report, the report is screened to determine the appropriate intervention method. If the report indicates behaviors that constitute criminal violation, the response to the report is an evidentiary, fact-finding Investigation. It is CD policy to notify the appropriate local law enforcement agency to assist in the Investigation.

Reports of child abuse or neglect that do not fall into the category of criminal violation may be responded to by conducting a Family Assessment. The main purpose of a Family Assessment is to determine the child's safety and the family's needs for services. Taking a non-punitive assessment approach has created an environment that assists the family and social worker in developing a rapport and building on existing strengths to create a mutually agreed upon plan. The attention is centered on long term effects of the intervention (success = independence) versus an individual incident (failure = dependence).

In 1994, the Missouri General Assembly mandated a two-year independent evaluation of the Family Assessment approach to addressing child abuse/neglect (CA/N). The evaluation completed in June 1997 concluded that the safety of children was improved, CA/N reports decreased, families received services more quickly, families were more cooperative, and community resource utilization increased. Additionally, the community joined together in coordinating available resources to assist children and families in need. These communities have continued to meet today's challenges by working to develop resources to better address needs.

In 2002, a follow-up independent evaluation conducted by the Institute of Applied Research began. Results are available on their website at www.iarsl.org.

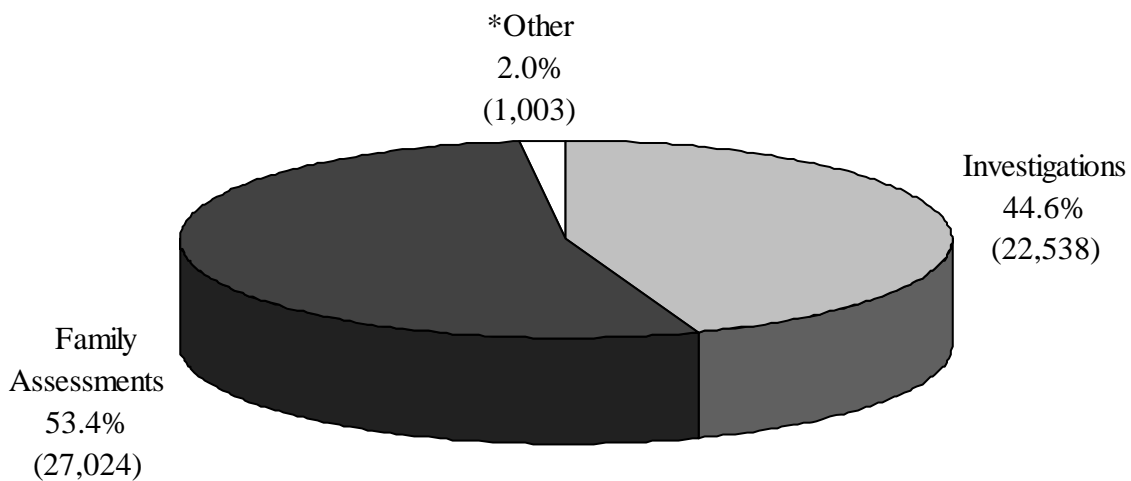
Child Protection System: Family Assessments/Investigations

An investigative delivery approach is designed to focus the efforts of CD and law enforcement on reports that indicate a crime had been committed. The remaining families are served through Family Assessments, in order to address any service needs. Families who are investigated and those who receive the Family Assessment response both receive prompt and effective delivery of services in order to address their needs.

Track assignments determine which approach, assessment or investigation, the Children's Service Worker will take in response to a child abuse/neglect report. Reports that initially receive a track assignment of assessment may not, however, be concluded assessment (i.e., services needed, services not needed, or non-cooperative/child safe). Assessment tracks not concluded as such may have conclusions of unable to locate, located out of state, or home schooling. Therefore, the statistics on pages 21, 22, and 24 are not based on 26,144, the number of reports concluded assessment, but on the number of reports assigned to the Family Assessment approach. The number of reports during 2008 assigned to the Family Assessment approach equaled 27,024.

The Family Assessment approach began in selected counties in 1995. By June 1999, all counties had implemented the Family Assessment approach.

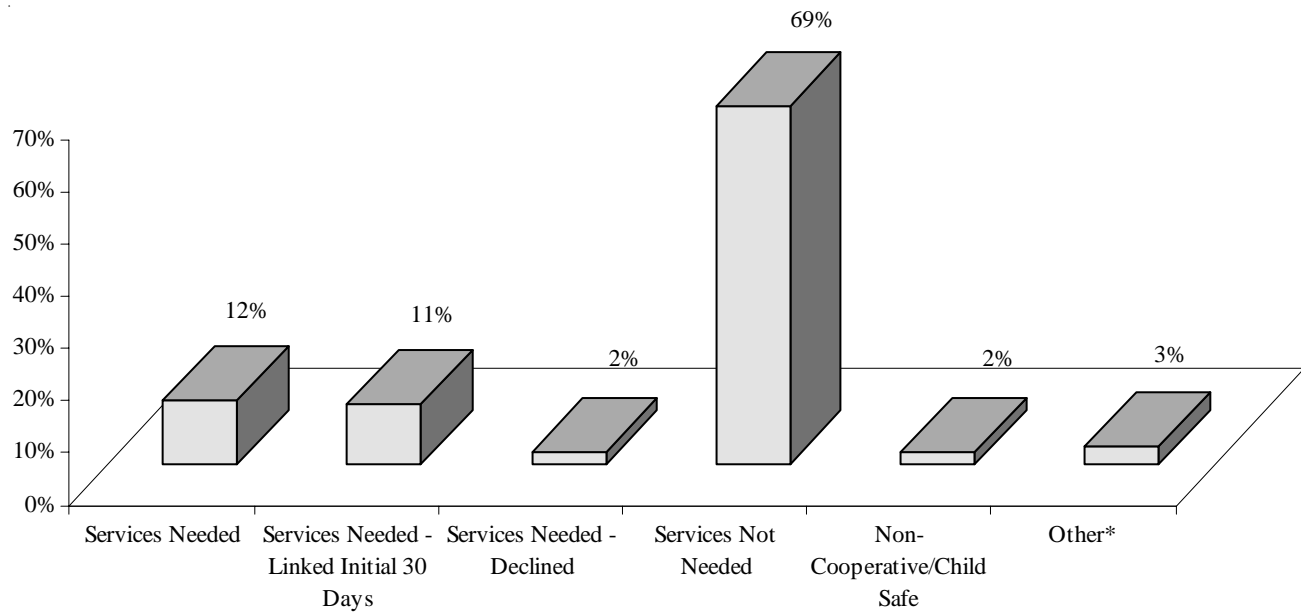
Reports by Type of Response During 2008



* Includes incidents with the conclusion of Inappropriate Report and incidents in which the conclusions are pending and the final response assignment could not be determined.

Child Protection System: Family Assessments/Investigations

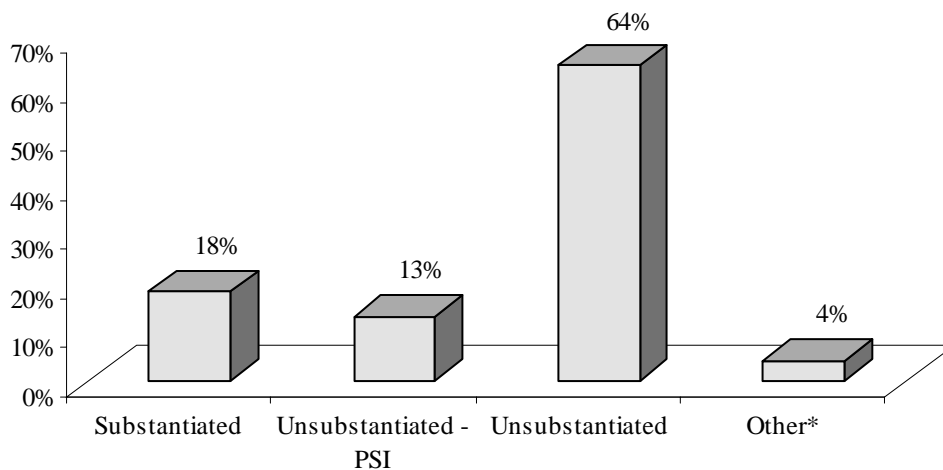
Child Protection System: Family Assessments by Conclusion, 2008



Of the 27,024 reports assigned to the Family Assessment approach, twelve percent (12%) of the families were in need of services, sixty-nine percent (69%) did not need services, and only two percent (2%) were non-cooperative. Eleven percent (11%) of the families were in need of services and linked in the initial 30 days. Two percent (2%) were in need of services but declined receiving any service.

Of the 22,538 reports assigned to the investigative track, twenty percent (18%) were substantiated.

Child Protection System: Investigations by Conclusion, 2008



* Other includes Unable to Locate, Inappropriate Report, Located Out of State, and Home Schooling (based on response assignment).

Child Protection System: Family Assessments/Investigations

Child Demographics

Family Assessment Children, 2008

Age	Family Assessment		Services Needed		Services Needed - Linked Initial 30 Ds		Services Needed - Family Declined	
	Number	Percent	Number	Percent	Number	Percent	Number	Percent
<1	1,972	5.1%	353	6.6%	188	4.2%	43	4.8%
1	2,190	5.6%	321	6.0%	191	4.3%	47	5.2%
2	2,376	6.1%	335	6.3%	210	4.7%	53	5.9%
3	2,312	5.9%	282	5.3%	203	4.6%	35	3.9%
4	2,335	6.0%	255	4.8%	224	5.0%	54	6.0%
5	2,555	6.6%	325	6.1%	251	5.6%	69	7.7%
6	2,717	7.0%	377	7.1%	299	6.7%	57	6.4%
7	2,761	7.1%	380	7.1%	282	6.3%	66	7.4%
8	2,485	6.4%	330	6.2%	275	6.2%	55	6.1%
9	2,248	5.8%	292	5.5%	234	5.3%	59	6.6%
10	2,127	5.5%	280	5.3%	235	5.3%	32	3.6%
11	1,952	5.0%	263	4.9%	244	5.5%	50	5.6%
12	1,967	5.1%	275	5.2%	243	5.5%	48	5.4%
13	2,021	5.2%	328	6.2%	328	7.4%	39	4.4%
14	2,137	5.5%	309	5.8%	346	7.8%	63	7.0%
15	2,082	5.4%	311	5.8%	330	7.4%	64	7.1%
16	1,523	3.9%	207	3.9%	215	4.8%	41	4.6%
17	840	2.2%	84	1.6%	125	2.8%	17	1.9%
Unknown	296	0.8%	13	0.2%	24	0.5%	4	0.4%
TOTAL	38,896	100.0%	5,320	100.0%	4,447	100.0%	896	100.0%
Sex								
Male	19,831	51.0%	2,665	50.1%	2,204	49.6%	461	51.5%
Female	19,049	49.0%	2,652	49.8%	2,242	50.4%	435	48.5%
Unknown	16	0.0%	3	0.1%	1	0.0%	0	0.0%
Total	38,896	100.0%	5,320	100.0%	4,447	100.0%	896	100.0%
Race								
White	30,714	79.0%	4,218	79.3%	3,470	78.0%	717	80.0%
Black	7,231	18.6%	976	18.3%	871	19.6%	158	17.6%
Native American	71	0.2%	7	0.1%	6	0.1%	0	0.0%
Asian	113	0.3%	12	0.2%	7	0.2%	1	0.1%
Other	299	0.8%	49	0.9%	22	0.5%	8	0.9%
Unknown	468	1.2%	58	1.1%	71	1.6%	12	1.3%
Total	38,896	100.0%	5,320	100.0%	4,447	100.0%	896	100.0%

During the year 38,896 children were involved in reports screened Family Assessment. Fifty-one percent (51%) of the family assessment children were male and forty-nine percent (49%) were female. Seventy-nine percent (79%) of the children were white and nineteen percent (19%) were black.

Of the Family Assessment children 5,320 children had a conclusion of services needed, 4,447 a conclusion of services needed-linked in the initial 30 days, and 896 a conclusion of services needed but the family declined services. The majority of the children that needed services were white followed by black children. Approximately half of the children that needed services were male and half were female.

Child Protection System: Family Assessments/Investigations

The goals of the Family Assessment approach are to assure child safety, address the strengths of the family and to identify and treat the family's needs. Services and supports for families are designed to build on the strengths and resources of families and communities. In keeping with this philosophy, the list of **Observed Family Characteristics** was expanded to include more strength-based characteristics. Some of the new characteristics are extended family support systems, problem-solving skills and good physical/mental health.

In sixty-five percent (65%) of the assessments, the families had adequate living conditions. Thirty-seven percent (37%) of the assessments involved families that were amenable to services. Other frequently cited characteristics include extended family support system, single parent household, appropriate parenting skills, and community/cultural support. The top 25 characteristics are listed below.

**Child Protection System: Family Assessment Approach
Characteristics of Families Involved in Family Assessments
During 2008**

	Number	Percent
Adequate living conditions	17,651	65.3%
Amenable to services	10,050	37.2%
Extended family support system	9,447	35.0%
Single parent household	6,902	25.5%
Appropriate parenting skills	6,336	23.4%
Community/cultural support	5,298	19.6%
Appropriate child development knowledge	3,803	14.1%
Stable family relationships/household	1,924	7.1%
Lack of parenting skills	1,831	6.8%
Good physical/mental health	1,749	6.5%
Heavy continuous child care responsibility	1,667	6.2%
Recent/frequent relocation	1,469	5.4%
Crowded living conditions	1,442	5.3%
Problem-solving skills	1,308	4.8%
New baby in home/pregnancy	1,068	4.0%
Recent loss/addition to household members	1,065	3.9%
Insufficient/misuse of income	1,004	3.7%
Loss of employment	879	3.3%
Other drug-related problem(s)	820	3.0%
Domestic violence	816	3.0%
Marital problems	763	2.8%
Stable marriage	627	2.3%
No history of violence	608	2.2%
Alcohol-related problem(s)	530	2.0%
Manages finances well	373	1.4%

Percent is the percentage of total reports assigned to the Family Assessment approach. Percent total is greater than 100 because up to 15 family characteristics may be reported for each Family Assessment.

Child Protection System: Family Assessments/Investigations

The characteristics for families involved in investigations are similar in rank to those of families in the assessment response. In sixty percent (60%) of the investigations, the families had adequate living conditions. Amenable to services, extended family support system, single parent household, and appropriate parenting skills were also cited frequently.

Investigations had a slightly lower percentage in families amenable to services and families with adequate living conditions, 36% and 60% respectively, as compared to assessment families who had 37% and 65% respectively. The top 25 characteristics are listed below.

**Child Protection System: Family Investigation Approach
Characteristics of Families Involved in Investigations
During 2008**

	Number	Percent
Adequate living conditions	13,502	59.9%
Amenable to services	7,992	35.5%
Extended family support system	7,696	34.1%
Single parent household	5,091	22.6%
Appropriate parenting skills	4,485	19.9%
Community/cultural support	3,950	17.5%
Appropriate child development knowledge	2,759	12.2%
Lack of parenting skills	2,227	9.9%
Heavy continuous child care responsibility	1,463	6.5%
Good physical/mental health	1,402	6.2%
Stable family relationships/household	1,341	5.9%
Recent/frequent relocation	1,287	5.7%
Domestic violence	1,099	4.9%
Crowded living conditions	1,053	4.7%
Problem-solving skills	1,043	4.6%
Other drug-related problem(s)	1,017	4.5%
Recent loss/addition to household members	1,010	4.5%
New baby in home/pregnancy	1,006	4.5%
Insufficient/misuse of income	828	3.7%
Marital problems	787	3.5%
Loss of employment	714	3.2%
Alcohol-related problem(s)	600	2.7%
Stable marriage	520	2.3%
No history of violence	456	2.0%
Dangerous living conditions	401	1.8%

Percent is the percentage of total reports assigned to the investigative approach. Percent total is greater than 100 because up to 15 family characteristics may be reported for each investigation.

Prevention/Treatment Services

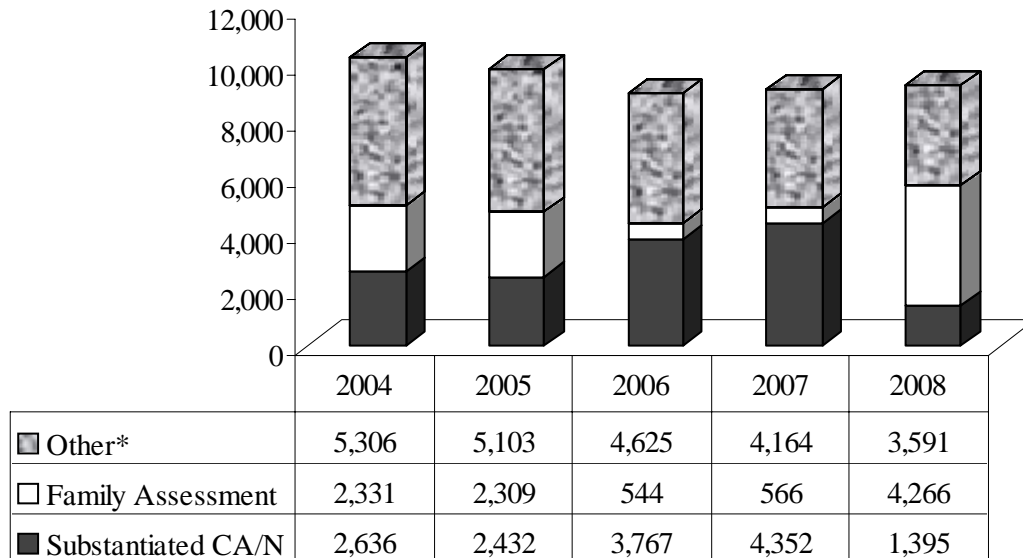
CD has several programs designed to provide treatment and to help prevent future occurrence of child abuse and neglect.

Family-Centered Services (FCS): FCS are provided to families and children in their own homes when a child abuse/neglect investigation has been concluded Substantiated, Unsubstantiated-Preventive Services Indicated or Family Assessment-Services Needed. These services are also provided to families who voluntarily seek help and to families whose children are placed out of the home. Services are provided following a family-centered assessment to identify risk issues, family strengths and service needs. A family treatment plan is developed with the family to help them change the conditions which brought them to the attention of CD. Services are designed to help the family direct their own affairs and provide suitable care for the children. The primary purpose of FCS is to improve and maintain the family unit or to reunify the family when alternative care services are provided. Services include a range of treatment and support services. The family treatment plan determines whether services are provided by CD staff and/or purchased or provided by community agencies. Purchased services include day care, family and/or individual counseling, home-based family-centered services, evaluation and diagnosis, homemaker services and respite care, among others.

- During 2008, there were 9,252 FCS cases opened in Missouri.
- In 2008, forty-six percent (46%) of all FCS case openings were the result of a Family Assessment.

Prevention/Treatment Services

**Family-Centered Services Case Openings by Reason for Opening,
2004 - 2008**



* Other includes Family Requests Preventive Services, Court Order and Newborn Crisis Assessment.

Variations in data for 2006 and 2007 were the result of conversion to a new information system.

Intensive In-Home Services (IIS): IIS are intensive in-home services designed to prevent unnecessary out-of-home placement of children. An in-home specialist provides a variety of services to the entire family to address the crisis that would normally necessitate out-of-home care for a child. Services are delivered immediately at the time of crisis and are time-limited, usually four to six weeks. In-home specialists carry small caseloads of two families. This enables them to spend as much time with the family as needed. The emphasis of IIS is on strengthening the entire family by improving its problem-solving capabilities and teaching them necessary life skills. Among other services, families may receive family therapy, individual and marital counseling, parenting education, child development training, household maintenance and nutritional training, job readiness training and referrals to other community resources. Families authorized for IIS may have children who have been abused or neglected, have committed a status offense, have displayed delinquent behavior, or who are seriously emotionally disturbed and are at imminent risk of being removed from the home. This service is voluntary and at least one caretaker must be willing to participate.

Prevention/Treatment Services

Out-of-Home Placement: Out-of-home care is provided in situations where a parent or parents are incapable of providing a child or children with adequate social, emotional and physical care. Out-of-home is defined as care provided in licensed foster or approved relative family homes, in licensed residential facilities, or in licensed foster group homes. The service provides substitute settings for children. Children are placed only after it is determined that they cannot remain at home.

Crisis Nurseries: The first state-funded crisis nurseries began providing services to children and their families in May 1993. There are nine of these facilities. Crisis nurseries are child care facilities which protect children by providing a safe environment at a time when the chances of abuse/neglect in the home are increased. Parents voluntarily request and arrange this service directly with the crisis nursery.

Child Abuse/Neglect Review Board: Children's Service Workers reach a conclusion on each child abuse/neglect investigation and notify the parents and alleged perpetrator (if different than the parents) by letter of the conclusion. In some investigations where the conclusion is substantiated, the alleged perpetrator may disagree with the finding. The alleged perpetrator may appeal to the Child Abuse/Neglect Review Board for review of the investigation by contacting the local CD office within 60 days of the notification of the finding. If there are pending criminal charges, the request may be made 60 days from the court's final disposition or dismissal of charges. If convicted, there is no appeal.

The Child Abuse/Neglect Review Board consists of three boards of nine private citizens appointed by the Governor. These boards each meet monthly to review child abuse/neglect appeals. They listen to testimony from CD staff, the alleged perpetrator, and representatives of the child and then make a decision to uphold or reverse the original CD decision. During 2008, the review board heard 304 cases. The percentage of cases upheld by the Board was 52%.

Following the Child Abuse and Neglect Review Board's disposition, the alleged perpetrator will have 30 days to request a judicial review.

Background Screening and Investigation Unit: The Background Screening and Investigation Unit conducts background checks through the child abuse/neglect systems in CD. These checks are run on prospective foster and adoptive parents for CD and for current or prospective employees in the child care industry (day care, residential care providers, schools, etc.). The purpose of the unit is to provide information on potential employees so that a prospective employer can assess if the person is appropriate to care for children. During 2008, the unit processed 120,070 background checks.

Prevention/Treatment Services

Mandated Reporter Referrals: The state child abuse/neglect law mandates certain professions (mandated reporters) to make a report to the Missouri Children's Division when they have reasonable cause to suspect that a child has been or may be subjected to abuse or neglect. However, many times the mandated reporter may not suspect abuse or neglect but has some other concern about a family.

Effective July 1996 the division implemented a policy to accept referrals of concern from a mandated reporter which does not rise to the level of a CA/N report. The division refers to these calls as Mandated Reporter Referrals. This service is being provided because division staff are often aware of community resources available to families and to continue the positive communication between CD staff and mandated reporters. The reporter will be told by the hotline social worker whether their call is being accepted as a hotline report or as a Mandated Reporter Referral. Mandated Reporter Referrals will be reported immediately to the appropriate county CD Office.

Local CD staff will contact the reporter within three working days of the report, or the next working day if the report is received over the weekend or a holiday period, to discuss the situation with the mandated reporter and mutually determine the most appropriate action to be taken. The exception is if the report indicates an emergency situation the reporter will be contacted as soon as possible. While the division in a few situations may offer services to families, the primary purpose is to help the mandated reporter make community support connections for the family. The following are possible responses to the referrals:

- The mandated reporter is made aware of appropriate community resources and provides referrals for the family.
- The reporter or CD staff contact the family by telephone to assist the family in arranging appropriate referrals.
- CD staff visit the family to obtain additional information and assess the needs of the family.
- CD staff determine that, based upon additional information, a child abuse/neglect report is necessary.
- During 2008, there were 17,907 Mandated Reporter Referrals.

Prevention/Treatment Services

Newborn Crisis Assessments and Services: CD collaborates with the Department of Health in conjunction with the Department of Mental Health and the Department of Elementary and Secondary Education to address the increasing problem of substance abusing pregnant women and drug exposed infants. Missouri law requires the Departments of Health, Mental Health, Elementary and Secondary Education, and Social Services (CD) to provide a non-punitive system of educational and treatment services related to the prenatal consumption of alcohol and other drugs. This inter-departmental effort is known as the Perinatal Substance Abuse Advisory Council. This council meets quarterly to discuss issues related to the needs of the drug-exposed infant, substance abusing pregnant women, assessment process, training, accessing available resources, legislative and policy changes.

In most instances, CD receives a Newborn Crisis Assessment Referral, via the CA/N hotline, from the physician or health care provider, who requests CD to conduct an assessment to determine the caretaker's suitability to care for an infant, or to provide protective services as directed by a physician. Following the completion of the Newborn Crisis Assessment, CD coordinates services with the Department of Health and the Department of Mental Health. Service Coordinators in the Department of Health's Bureau of Special Health Care Needs will provide health and developmental screenings throughout their involvement with the family. The Department of Mental Health provides drug treatment services for the substance abusing parent, as well as the family. In 2008, the Division received 2,851 reports from medical professionals for drug-exposed infants and subsequent assessment for services by CD.

Children reported to the Division for abuse and neglect are sometimes identified during the investigation process as having been exposed prenatally to drugs. In 2008, 171 children reported to the hotline for abuse and neglect were identified as drug-exposed.

Appendices

Appendix A.

2008 Reported Incidents by Region, County and Conclusion

REGION	COUNTY	SUBSTANTIATED		UNSUB.-PSI		UNSUB.		FA		OTHER		TOTAL	
		Number	%	Number	%	Number	%	Number	%	Number	%		
NORTHWEST	ANDREW	5	3.6	16	11.6	30	21.7	83	60.1	4	2.9	138	
	ATCHISON	0	0	0	0	10	33.3	18	60	2	6.7	30	
	BUCHANAN	88	8.1	123	11.3	291	26.7	545	50	43	3.9	1,090	
	CALDWELL	6	6.7	11	12.4	27	30.3	40	44.9	5	5.6	89	
	CARROLL	4	4.3	2	2.1	29	30.9	56	59.6	3	3.2	94	
	CASS	34	5.1	84	12.5	195	29	316	47	44	6.5	673	
	CHARITON	13	22.4	4	6.9	13	22.4	27	46.6	1	1.7	58	
	CLINTON	12	9.8	9	7.4	27	22.1	65	53.3	9	7.4	122	
	COOPER	9	4.7	21	10.9	50	26	101	52.6	11	5.7	192	
	DAVISS	6	9.5	4	6.3	20	31.7	31	49.2	2	3.2	63	
	DE KALB	8	9.6	10	12	17	20.5	42	50.6	6	7.2	83	
	GENTRY	5	8.2	5	8.2	16	26.2	30	49.2	5	8.2	61	
	GRUNDY	7	5.4	24	18.6	26	20.2	68	52.7	4	3.1	129	
	HARRISON	4	5.1	10	12.7	14	17.7	50	63.3	1	1.3	79	
	HOLT	2	5.7	1	2.9	15	42.9	16	45.7	1	2.9	35	
	JOHNSON	21	6.5	14	4.3	113	34.8	168	51.7	9	2.8	325	
	LAFAYETTE	22	7.9	14	5	81	29	151	54.1	11	3.9	279	
	LINN	12	11.3	6	5.7	33	31.1	51	48.1	4	3.8	106	
	LIVINGSTON	15	8.2	14	7.6	49	26.6	96	52.2	10	5.4	184	
	MERCER	3	10	4	13.3	5	16.7	17	56.7	1	3.3	30	
	NODAWAY	12	12.9	4	4.3	25	26.9	42	45.2	10	10.8	93	
	PETTIS	31	6.9	19	4.2	188	41.7	195	43.2	18	4	451	
	PUTNAM	5	10.6	7	14.9	14	29.8	19	40.4	2	4.3	47	
RAY	9	4.1	11	5.1	75	34.6	118	54.4	4	1.8	217		
SALINE	32	14	6	2.6	54	23.6	125	54.6	12	5.2	229		
SULLIVAN	7	12.7	5	9.1	11	20	32	58.2	0	0	55		
WORTH	1	6.3	2	12.5	0	0	11	68.8	2	12.5	16		
	REGION TOTAL	373	7.5	430	8.7	1,428	28.7	2,513	50.6	224	4.5	4,968	
NORTHEAST	ADAIR	9	4.4	18	8.9	43	21.2	122	60.1	11	5.4	203	
	AUDRAIN	33	12.4	9	3.4	74	27.8	125	47	25	9.4	266	
	BOONE	63	5.5	59	5.2	422	36.9	557	48.7	43	3.8	1,144	
	CALLAWAY	23	5.2	19	4.3	136	31	226	51.5	35	8	439	
	CLARK	3	5.6	4	7.4	16	29.6	28	51.9	3	5.6	54	
	COLE	22	3.8	19	3.3	226	39.4	281	49	26	4.5	574	
	FRANKLIN	59	7.5	53	6.8	235	30.1	402	51.4	33	4.2	782	
	GASCONADE	3	1.9	15	9.4	55	34.6	85	53.5	1	0.6	159	
	HOWARD	3	4.8	2	3.2	16	25.8	38	61.3	3	4.8	62	
	KNOX	1	2.8	3	8.3	6	16.7	23	63.9	3	8.3	36	
	LEWIS	7	8.5	6	7.3	21	25.6	47	57.3	1	1.2	82	
	LINCOLN	53	11.4	20	4.3	153	33	220	47.5	17	3.7	463	
	MACON	11	7.6	16	11.1	28	19.4	80	55.6	9	6.3	144	
	MARION	20	7	14	4.9	61	21.3	172	59.9	20	7	287	
	MONROE	1	1.4	4	5.5	20	27.4	47	64.4	1	1.4	73	
	MONTGOMERY	18	15.5	14	12.1	27	23.3	56	48.3	1	0.9	116	
	OSAGE	0	0	5	5.9	29	34.1	49	57.6	2	2.4	85	
	PIKE	23	12.2	12	6.4	55	29.3	89	47.3	9	4.8	188	
	NORTHEAST	RALLS	6	9.4	9	14.1	14	21.9	32	50	3	4.7	64
		RANDOLPH	41	14.5	9	3.2	81	28.7	136	48.2	15	5.3	282
SCHUYLER		3	7.5	5	12.5	10	25	20	50	2	5	40	
SCOTLAND		1	4.5	2	9.1	6	27.3	11	50	2	9.1	22	
SHELBY		2	3.9	5	9.8	15	29.4	25	49	4	7.8	51	
WARREN		40	12.8	28	8.9	84	26.8	152	48.6	9	2.9	313	
		REGION TOTAL	445	7.5	350	5.9	1,833	30.9	3,023	51	278	4.7	5,929
SOUTHEAST	BOLLINGER	8	6.5	0	0	44	35.8	70	56.9	1	0.8	123	
	BUTLER	48	8.8	21	3.8	168	30.8	292	53.5	17	3.1	546	
	CAPE GIRARDEAU	34	5.9	3	0.5	168	29.1	346	60	26	4.5	577	
	CARTER	5	8.1	6	9.7	23	37.1	25	40.3	3	4.8	62	
	CRAWFORD	12	4.7	15	5.9	73	28.9	139	54.9	14	5.5	253	
	DENT	5	2.5	17	8.3	69	33.8	97	47.5	16	7.8	204	
	DUNKLIN	32	6.7	43	9	160	33.3	224	46.7	21	4.4	480	
	HOWELL	56	10.1	98	17.6	130	23.4	249	44.8	23	4.1	556	
	IRON	11	9.8	8	7.1	37	33	52	46.4	4	3.6	112	
	MADISON	10	10	5	5	33	33	48	48	4	4	100	
	MARIES	10	11.4	5	5.7	28	31.8	43	48.9	2	2.3	88	
	MISSISSIPPI	8	4.5	19	10.6	65	36.3	84	46.9	3	1.7	179	
	NEW MADRID	12	5.8	11	5.3	81	38.9	89	42.8	15	7.2	208	
	OREGON	2	1.7	18	15.1	30	25.2	57	47.9	12	10.1	119	
	PEMISCOT	30	9	20	6	124	37.1	132	39.5	28	8.4	334	
	PERRY	18	11.1	3	1.9	48	29.6	90	55.6	3	1.9	162	
	PHELPS	50	12.3	30	7.4	108	26.6	200	49.3	18	4.4	406	
PULASKI	61	15.1	30	7.4	96	23.7	188	46.4	30	7.4	405		

Appendix A. (continued)
2008 Reported Incidents by Region, County and Conclusion

REGION	COUNTY	SUBSTANTIATED		UNSUB.-PSI		UNSUB.		FA		OTHER		TOTAL	
		Number	%	Number	%	Number	%	Number	%	Number	%		
SOUTHEAST	REYNOLDS	2	2.5	9	11.4	24	30.4	41	51.9	3	3.8	79	
	RIPLEY	23	11	11	5.2	52	24.8	113	53.8	11	5.2	210	
	STFRANCOIS	58	9	42	6.5	195	30.2	331	51.2	20	3.1	646	
	STEGENEVIEVE	12	10.3	10	8.5	29	24.8	59	50.4	7	6	117	
	SCOTT	40	9.7	38	9.2	136	33.1	181	44	16	3.9	411	
	SHANNON	5	6.3	7	8.8	25	31.3	38	47.5	5	6.3	80	
	STODDARD	42	15.7	29	10.9	60	22.5	124	46.4	12	4.5	267	
	TEXAS	35	13.2	43	16.2	60	22.6	124	46.6	4	1.5	266	
	WASHINGTON	36	14.2	17	6.7	69	27.2	125	49.2	7	2.8	254	
	WAYNE	4	2.6	22	14.4	46	30.1	76	49.7	5	3.3	153	
	REGION TOTAL	669	9	580	7.8	2,181	29.5	3,637	49.2	330	4.5	7,397	
	SOUTHWEST	BARRY	39	8.8	16	3.6	116	26.3	260	59	10	2.3	441
		BARTON	15	14.2	5	4.7	21	19.8	59	55.7	6	5.7	106
BATES		20	10.7	8	4.3	52	27.8	94	50.3	13	7	187	
BENTON		11	10.7	13	12.6	35	34	43	41.7	1	1	103	
CAMDEN		42	11.8	38	10.6	86	24.1	179	50.1	12	3.4	357	
CEDAR		12	8.2	3	2	23	15.6	97	66	12	8.2	147	
CHRISTIAN		43	6.7	68	10.6	173	26.9	345	53.7	13	2	642	
DADE		9	13.4	0	0	9	13.4	42	62.7	7	10.4	67	
DALLAS		20	11.6	10	5.8	57	32.9	80	46.2	6	3.5	173	
DOUGLAS		15	11.9	14	11.1	36	28.6	57	45.2	4	3.2	126	
GREENE		209	6.6	71	2.2	397	12.6	2,341	74.2	139	4.4	3,157	
HENRY		20	9.1	5	2.3	31	14.1	151	68.6	13	5.9	220	
HICKORY		6	7.8	10	13	23	29.9	34	44.2	4	5.2	77	
JASPER		85	6.2	110	8.1	419	30.8	694	51	54	4	1,362	
LACLEDE		65	12.4	61	11.6	134	25.6	249	47.5	15	2.9	524	
LAWRENCE		30	7.5	26	6.5	80	20	258	64.3	7	1.7	401	
MCDONALD		31	11.8	10	3.8	73	27.9	131	50	17	6.5	262	
MILLER		37	11.1	33	9.9	76	22.8	171	51.2	17	5.1	334	
MONITEAU		13	9.3	6	4.3	26	18.6	84	60	11	7.9	140	
MORGAN		34	16.2	27	12.9	38	18.1	99	47.1	12	5.7	210	
NEWTON		74	12.1	33	5.4	174	28.5	298	48.9	31	5.1	610	
OZARK		10	12.3	6	7.4	21	25.9	41	50.6	3	3.7	81	
POLK		28	8	59	16.9	82	23.4	172	49.1	9	2.6	350	
ST CLAIR		3	3.4	3	3.4	25	28.4	48	54.5	9	10.2	88	
STONE		25	8.9	25	8.9	54	19.3	165	58.9	11	3.9	280	
TANEY		63	11.8	69	13	112	21.1	266	50	22	4.1	532	
VERNON		10	4.9	7	3.4	34	16.6	127	62	27	13.2	205	
WEBSTER		31	8.2	15	4	124	32.7	195	51.5	14	3.7	379	
WRIGHT		23	8.4	26	9.5	104	38.1	118	43.2	2	0.7	273	
REGION TOTAL		1,023	8.6	777	6.6	2,635	22.3	6,898	58.3	501	4.2	11,834	
KANSAS CITY		CLAY	119	8.5	35	2.5	508	36.3	692	49.5	44	3.1	1,398
	JACKSON	513	8.7	223	3.8	1,334	22.5	3,411	57.6	438	7.4	5,919	
	PLATTE	47	9.5	48	9.7	128	25.8	253	51	20	4	496	
	REGION TOTAL	679	8.7	306	3.9	1,970	25.2	4,356	55.8	502	6.4	7,813	
ST. LOUIS	JEFFERSON	152	9.7	106	6.8	274	17.6	993	63.7	35	2.2	1,560	
	ST CHARLES	143	9.2	46	3	512	32.8	804	51.6	54	3.5	1,559	
	ST LOUIS COUNTY	310	6.9	124	2.8	1,052	23.6	2,454	55	523	11.7	4,463	
	ST LOUIS CITY	241	7.4	240	7.4	1,072	32.9	1,466	45	237	7.3	3,256	
REGION TOTAL	846	7.8	516	4.8	2,910	26.8	5,717	52.7	849	7.8	10,838		
OTHER	OUT HOME INV	96	5.5	2	0.1	1,540	89	0	0	92	5.3	1,730	
	OUT OF STATE	0	0	0	0	0	0	0	0	56	100	56	
	REGION TOTAL	96	5.4	2	0.1	1,540	86.2	0	0	148	8.3	1,786	
STATETOTAL	4,131	8.2	2,961	5.9	14,497	28.7	26,144	51.7	2,832	5.6	50,565		

Conclusions are as follows: Substantiated - Court Adjudicated and Preponderance of Evidence; Unsub.-PSI - Unsubstantiated-Preventive Services Indicated; Unsub. - Unsubstantiated; FA - Family Assessment: Services Needed, Services Not Needed, Non-cooperative/Child Safe, Services Needed-Linked Initial 30 Days, and Services Needed-Family Declined; Other - Unable to Locate, Inappropriate Report, Located Out of State, Home Schooling, and School Investigation by School Board (Substantiated, Unsubstantiated, and Unresolved)

Appendix B.

2008 Reported Children by Region, County and Conclusion

REGION	COUNTY	CHILDREN PER THOUSAND						SUBSTANTIATED	TOTAL REPORTED
		SUBSTANTIATED	UNSUB.-PSI	UNSUB.	FA	OTHER	TOTAL		
NORTHWEST	ANDREW	6	20	47	121	6	200	1.38	46.00
	ATCHISON	0	0	14	26	3	43	0.00	27.80
	BUCHANAN	127	164	434	863	64	1,652	6.07	78.90
	CALDWELL	6	19	39	65	5	134	2.47	55.19
	CARROLL	4	2	39	80	4	129	1.54	49.83
	CASS	46	123	287	438	58	952	1.97	40.85
	CHARITON	28	6	25	40	1	100	14.02	50.08
	CLINTON	19	10	41	104	12	186	3.74	36.62
	COOPER	20	35	70	160	13	298	5.26	78.40
	DAVISS	14	14	33	44	3	108	6.48	49.95
	DE KALB	12	14	29	63	14	132	4.99	54.93
	GENTRY	8	7	26	46	8	95	4.49	53.31
	GRUNDY	10	32	43	91	6	182	4.13	75.08
	HARRISON	10	17	15	90	1	133	4.76	63.24
	HOLT	5	1	30	27	2	65	3.93	51.10
	JOHNSON	31	18	170	258	17	494	2.56	40.75
	LAFAYETTE	43	23	126	248	11	451	4.98	52.22
	LINN	21	9	54	86	7	177	6.02	50.73
	LIVINGSTON	22	17	75	137	13	264	6.19	74.30
	MERCER	4	8	6	26	6	50	4.63	57.87
	NODAWAY	29	10	38	68	19	164	6.83	38.63
PETTIS	47	24	262	313	31	677	4.53	65.24	
PUTNAM	6	10	19	29	2	66	4.78	52.63	
RAY	13	19	94	187	6	319	2.02	49.59	
SALINE	64	6	89	196	17	372	11.09	64.44	
SULLIVAN	11	9	18	48	0	86	6.09	47.59	
WORTH	1	3	0	12	4	20	1.73	34.54	
	REGION TOTAL	607	620	2,123	3,866	333	7,549	4.42	54.98
NORTHEAST	ADAIR	15	22	64	211	15	327	3.13	68.18
	AUDRAIN	51	12	96	176	33	368	8.02	57.86
	BOONE	87	92	601	791	65	1,636	2.82	52.94
	CALLAWAY	41	30	206	331	49	657	3.95	63.35
	CLARK	6	7	21	43	4	81	3.24	43.74
	COLE	30	28	315	423	36	832	1.73	48.11
	FRANKLIN	93	76	360	639	52	1,220	3.62	47.54
	GASCONADE	4	26	75	147	2	254	1.05	66.84
	HOWARD	4	2	23	62	5	96	1.63	39.17
	KNOX	3	4	7	39	4	57	2.76	52.44
	LEWIS	11	8	27	67	3	116	4.19	44.16
	LINCOLN	96	34	253	328	29	740	8.21	63.30
	MACON	24	23	45	112	11	215	6.28	56.28
	MARION	35	19	88	286	23	451	4.81	62.04
	MONROE	2	4	29	74	4	113	0.83	46.89
	MONTGOMERY	37	21	44	93	2	197	11.99	63.86
	OSAGE	0	8	47	72	2	129	0.00	37.53
	PIKE	48	14	83	141	14	300	11.18	69.88
	RALLS	13	13	22	44	4	96	5.35	39.52
	RANDOLPH	68	14	132	214	26	454	11.58	77.29
	SCHUYLER	13	10	17	26	2	68	12.66	66.21
SCOTLAND	1	2	12	14	2	31	0.70	21.78	
SHELBY	7	6	32	35	7	87	4.05	50.32	
WARREN	63	46	106	218	10	443	9.57	67.26	
	REGION TOTAL	752	521	2,705	4,586	404	8,968	4.63	55.26
SOUTHEAST	BOLLINGER	12	0	63	105	1	181	3.81	57.44
	BUTLER	71	32	259	478	31	871	7.18	88.10
	CAPE GIRARDEAU	58	4	228	513	32	835	3.60	51.87
	CARTER	5	13	36	35	5	94	3.35	62.96
	CRAWFORD	17	24	111	216	17	385	2.84	64.27
	DENT	7	27	111	155	24	324	1.88	87.19
	DUNKLIN	45	84	247	349	33	758	5.22	88.01
	HOWELL	107	135	205	349	28	824	11.06	85.16
	IRON	17	9	66	73	4	169	6.36	63.22
	MADISON	20	6	51	82	4	163	6.89	56.13
	MARIES	18	14	45	76	5	158	7.77	68.16
	MISSISSIPPI	12	33	105	135	5	290	3.40	82.06
	NEW MADRID	20	18	118	133	21	310	3.83	59.35
	OREGON	2	22	42	82	14	162	0.80	64.41
	PEMISCOT	39	31	180	225	45	520	6.48	86.45
	PERRY	23	4	63	128	4	222	4.88	47.08
	PHELPS	88	57	150	293	22	610	9.32	64.60
	PULASKI	123	45	122	296	37	623	10.85	54.95

Appendix B. (continued)
2008 Reported Children by Region, County and Conclusion

REGION	COUNTY							CHILDREN PER THOUSAND	
		SUBSTAN- TIATED	UNSUB.- PSI	UNSUB.	FA	OTHER	TOTAL	SUBSTAN- TIATED	TOTAL REPORTED
SOUTHEAST	REYNOLDS	5	12	46	66	3	132	3.11	82.09
	RIPLEY	33	14	78	168	14	307	9.84	91.59
	STFRANCOIS	96	61	296	505	26	984	7.20	73.79
	STEGENEVIEVE	18	20	41	100	7	186	3.79	39.17
	SCOTT	55	64	182	294	25	620	4.96	55.93
	SHANNON	5	7	37	45	10	104	2.27	47.29
	STODDARD	74	46	88	214	22	444	10.43	62.60
	TEXAS	64	59	95	191	7	416	11.16	72.55
	WASHINGTON	60	31	92	208	11	402	9.67	64.79
	WAYNE	10	37	81	125	5	258	3.25	83.79
	REGION TOTAL	1,104	909	3,238	5,639	462	11,352	6.58	67.68
SOUTHWEST	BARRY	61	28	162	402	12	665	6.87	74.93
	BARTON	38	5	36	109	8	196	11.03	56.89
	BATES	42	12	79	158	30	321	9.50	72.64
	BENTON	26	18	46	67	8	165	7.39	46.93
	CAMDEN	65	52	126	287	21	551	8.66	73.39
	CEDAR	14	4	46	145	15	224	4.14	66.23
	CHRISTIAN	69	88	260	484	22	923	4.57	61.07
	DADE	12	0	18	55	8	93	6.22	48.24
	DALLAS	37	19	82	119	9	266	8.60	61.83
	DOUGLAS	19	19	57	75	5	175	5.62	51.74
	GREENE	345	109	528	3,284	205	4,471	6.45	83.57
	HENRY	29	14	47	233	37	360	5.56	68.97
	HICKORY	10	18	32	54	6	120	5.61	67.34
	JASPER	147	172	608	1,035	82	2,044	5.45	75.84
	LACLEDE	116	96	215	350	22	799	13.37	92.10
	LAWRENCE	60	41	108	360	10	579	6.26	60.45
	MCDONALD	52	16	117	208	28	421	8.31	67.26
	MILLER	73	59	115	266	30	543	11.78	87.61
	MONITEAU	28	6	33	119	14	200	7.30	52.14
	MORGAN	61	53	67	157	25	363	13.28	79.00
	NEWTON	151	47	278	490	55	1,021	10.93	73.88
	OZARK	16	6	33	67	4	126	7.59	59.80
	POLK	41	79	122	290	16	548	5.90	78.88
	STCLAIR	4	3	38	66	9	120	1.80	54.08
	STONE	36	33	79	260	23	431	5.87	70.22
	TANEY	113	99	155	393	29	789	12.68	88.53
	VERNON	12	10	45	192	34	293	2.21	53.90
WEBSTER	57	17	189	306	17	586	6.36	65.42	
WRIGHT	34	43	155	191	3	426	6.97	87.35	
REGION TOTAL	1,768	1,166	3,876	10,222	787	17,819	7.31	73.67	
KANSAS CITY	CLAY	161	49	722	923	64	1,919	3.39	40.37
	JACKSON	792	320	2,064	5,134	661	8,971	4.69	53.16
	PLATTE	71	58	180	350	29	688	3.73	36.16
	REGION TOTAL	1,024	427	2,966	6,407	754	11,578	4.35	49.20
ST. LOUIS	JEFFERSON	280	164	414	1,405	56	2,319	5.07	41.96
	ST CHARLES	243	82	758	1,100	86	2,269	2.95	27.59
	ST LOUIS COUNTY	443	167	1,502	3,391	751	6,254	1.73	24.43
	ST LOUIS CITY	377	420	1,655	2,280	400	5,132	4.20	57.24
REGION TOTAL	1,343	833	4,329	8,176	1,293	15,974	2.78	33.06	
OTHER	OUT HOME INV	134	2	2,176	0	153	2,465	0	0
	OUT OF STATE	0	0	0	0	76	76	0	0
	REGION TOTAL	134	2	2,176	0	229	2,541	0	0
STATETOTAL		6,732	4,478	21,413	38,896	4,262	75,781	4.72	53.08

Conclusions are as follows: Substantiated - Court Adjudicated and Preponderance of Evidence; Unsub.-PSI - Unsubstantiated-Preventive Services Indicated; Unsub. - Unsubstantiated; FA - Family Assessment: Services Needed, Services Not Needed, Non-cooperative/Child Safe, Services Needed-Linked Initial 30 Days, and Services Needed-Family Declined; Other - Unable to Locate, Inappropriate Report, Located Out of State, Home Schooling, and School Investigation by School Board (Substantiated, Unsubstantiated, and Unresolved)
Population data is based on the 2000 Census: Summary File 3, December 2001. Missouri population through age 17. U.S. Department of Commerce, Bureau of the Census.

Appendix C.

2008 Family Assessment Incidents by Region, County and Conclusion

REGION	COUNTY	SERVICE NEEDED		SERVICE NOT NEEDED		NON-COOPERATIVE		SERVICE NEEDED- LINKED INITIAL 30 DAYS		SERVICE NEEDED- DECLINED		TOTAL
		Number	%	Number	%	Number	%	Number	%	Number	%	
NORTHWEST	ANDREW	10	12	48	57.8	2	2.4	23	27.7	0	0	83
	ATCHISON	2	11.1	12	66.7	0	0	4	22.2	0	0	18
	BUCHANAN	53	9.7	409	75	3	0.6	69	12.7	11	2	545
	CALDWELL	3	7.5	28	70	2	5	6	15	1	2.5	40
	CARROLL	5	8.9	42	75	1	1.8	8	14.3	0	0	56
	CASS	35	11.1	207	65.5	3	0.9	67	21.2	4	1.3	316
	CHARITON	2	7.4	22	81.5	0	0	3	11.1	0	0	27
	CLINTON	8	12.3	44	67.7	3	4.6	9	13.8	1	1.5	65
	COOPER	16	15.8	71	70.3	4	4	7	6.9	3	3	101
	DAVISS	0	0	23	74.2	0	0	8	25.8	0	0	31
	DE KALB	3	7.1	32	76.2	0	0	6	14.3	1	2.4	42
	GENTRY	3	10	25	83.3	0	0	2	6.7	0	0	30
	GRUNDY	7	10.3	27	39.7	4	5.9	28	41.2	2	2.9	68
	HARRISON	9	18	19	38	0	0	21	42	1	2	50
	HOLT	0	0	12	75	0	0	4	25	0	0	16
	JOHNSON	10	6	143	85.1	3	1.8	12	7.1	0	0	168
	LAFAYETTE	6	4	134	88.7	4	2.6	6	4	1	0.7	151
	LINN	12	23.5	29	56.9	0	0	10	19.6	0	0	51
	LIVINGSTON	7	7.3	77	80.2	1	1	9	9.4	2	2.1	96
	MERCER	3	17.6	10	58.8	0	0	4	23.5	0	0	17
	NODAWAY	2	4.8	38	90.5	0	0	2	4.8	0	0	42
	PETTIS	22	11.3	149	76.4	1	0.5	16	8.2	7	3.6	195
	PUTNAM	0	0	13	68.4	0	0	6	31.6	0	0	19
RAY	8	6.8	97	82.2	1	0.8	7	5.9	5	4.2	118	
SALINE	6	4.8	87	69.6	8	6.4	22	17.6	2	1.6	125	
SULLIVAN	4	12.5	20	62.5	1	3.1	6	18.8	1	3.1	32	
WORTH	0	0	10	90.9	0	0	1	9.1	0	0	11	
	REGION TOTAL	236	9.4	1,828	72.7	41	1.6	366	14.6	42	1.7	2,513
NORTHEAST	ADAIR	16	13.1	60	49.2	6	4.9	39	32	1	0.8	122
	AUDRAIN	7	5.6	97	77.6	2	1.6	14	11.2	5	4	125
	BOONE	93	16.7	423	75.9	15	2.7	17	3.1	9	1.6	557
	CALLAWAY	23	10.2	172	76.1	6	2.7	22	9.7	3	1.3	226
	CLARK	5	17.9	20	71.4	0	0	3	10.7	0	0	28
	COLE	33	11.7	237	84.3	7	2.5	1	0.4	3	1.1	281
	FRANKLIN	52	12.9	282	70.1	3	0.7	53	13.2	12	3	402
	GASCONADE	13	15.3	66	77.6	4	4.7	2	2.4	0	0	85
	HOWARD	2	5.3	29	76.3	0	0	5	13.2	2	5.3	38
	KNOX	4	17.4	16	69.6	0	0	2	8.7	1	4.3	23
	LEWIS	2	4.3	38	80.9	0	0	5	10.6	2	4.3	47
	LINCOLN	23	10.5	167	75.9	4	1.8	20	9.1	6	2.7	220
	MACON	9	11.3	54	67.5	1	1.2	13	16.2	3	3.8	80
	MARION	27	15.7	115	66.9	2	1.2	24	14	4	2.3	172
	MONROE	10	21.3	34	72.3	0	0	2	4.3	1	2.1	47
	MONTGOMERY	9	16.1	44	78.6	0	0	2	3.6	1	1.8	56
	OSAGE	2	4.1	46	93.9	0	0	1	2	0	0	49
	PIKE	12	13.5	62	69.7	2	2.2	9	10.1	4	4.5	89
	RALLS	4	12.5	18	56.3	1	3.1	7	21.9	2	6.3	32
	RANDOLPH	15	11	103	75.7	1	0.7	16	11.8	1	0.7	136
	SCHUYLER	5	25	9	45	1	5	3	15	2	10	20
	SCOTLAND	0	0	4	36.4	0	0	7	63.6	0	0	11
	SHELBY	3	12	20	80	0	0	2	8	0	0	25
WARREN	28	18.4	85	55.9	4	2.6	24	15.8	11	7.2	152	
	REGION TOTAL	397	13.1	2,201	72.8	59	2	293	9.7	73	2.4	3,023
SOUTHEAST	BOLLINGER	17	24.3	49	70	0	0	3	4.3	1	1.4	70
	BUTLER	40	13.7	181	62	3	1	56	19.2	12	4.1	292
	CAPE GIRARDEAU	79	22.8	214	61.8	8	2.3	41	11.8	4	1.2	346
	CARTER	4	16	19	76	0	0	2	8	0	0	25
	CRAWFORD	15	10.8	107	77	2	1.4	13	9.4	2	1.4	139
	DENT	17	17.5	60	61.9	2	2.1	16	16.5	2	2.1	97
	DUNKLIN	48	21.4	168	75	4	1.8	3	1.3	1	0.4	224
	HOWELL	80	32.1	138	55.4	3	1.2	19	7.6	9	3.6	249
	IRON	9	17.3	32	61.5	1	1.9	10	19.2	0	0	52
	MADISON	5	10.4	39	81.3	0	0	3	6.3	1	2.1	48
	MARIES	7	16.3	35	81.4	0	0	1	2.3	0	0	43
	MISSISSIPPI	15	17.9	66	78.6	0	0	0	0	3	3.6	84
	NEW MADRID	11	12.4	78	87.6	0	0	0	0	0	0	89
	OREGON	19	33.3	32	56.1	1	1.8	4	7	1	1.8	57
	PEMISCOT	16	12.1	110	83.3	0	0	2	1.5	4	3	132
	PERRY	25	27.8	54	60	0	0	9	10	2	2.2	90
	PHELPS	38	19	147	73.5	1	0.5	9	4.5	5	2.5	200

Appendix C. (continued)

2008 Family Assessment Incidents by Region, County and Conclusion

REGION	COUNTY	SERVICE NEEDED		SERVICE NOT NEEDED		NON-COOPERATIVE		SERVICE NEEDED - LINKED INITIAL 30 DAYS		SERVICE NEEDED - DECLINED		TOTAL
		Number	%	Number	%	Number	%	Number	%	Number	%	
SOUTHEAST	PULASKI	22	11.7	130	69.1	5	2.7	26	13.8	5	2.7	188
	REYNOLDS	8	19.5	28	68.3	2	4.9	3	7.3	0	0	41
	RIPLEY	18	15.9	53	46.9	3	2.7	23	20.4	16	14.2	113
	ST FRANCOIS	42	12.7	250	75.5	7	2.1	28	8.5	4	1.2	331
	STEGENIEVE	3	5.1	53	89.8	1	1.7	2	3.4	0	0	59
	SCOTT	33	18.2	145	80.1	1	0.6	1	0.6	1	0.6	181
	SHANNON	3	7.9	30	78.9	3	7.9	1	2.6	1	2.6	38
	STODDARD	56	45.2	58	46.8	0	0	7	5.6	3	2.4	124
	TEXAS	25	20.2	77	62.1	0	0	13	10.5	9	7.3	124
	WASHINGTON	8	6.4	104	83.2	1	0.8	10	8	2	1.6	125
	WAYNE	16	21.1	51	67.1	0	0	8	10.5	1	1.3	76
		REGION TOTAL	679	18.7	2,508	69	48	1.3	313	8.6	89	2.4
SOUTHWEST	BARRY	27	10.4	213	81.9	2	0.8	14	5.4	4	1.5	260
	BARTON	15	25.4	43	72.9	0	0	1	1.7	0	0	59
	BATES	4	4.3	79	84	3	3.2	7	7.4	1	1.1	94
	BENTON	4	9.3	34	79.1	0	0	5	11.6	0	0	43
	CAMDEN	22	12.3	115	64.2	2	1.1	30	16.8	10	5.6	179
	CEDAR	8	8.2	84	86.6	0	0	5	5.2	0	0	97
	CHRISTIAN	36	10.4	233	67.5	4	1.2	59	17.1	13	3.8	345
	DADE	12	28.6	24	57.1	0	0	5	11.9	1	2.4	42
	DALLAS	2	2.5	71	88.8	1	1.2	6	7.5	0	0	80
	DOUGLAS	4	7	42	73.7	0	0	7	12.3	4	7	57
	GREENE	327	14	1,762	75.3	45	1.9	149	6.4	58	2.5	2,341
	HENRY	15	9.9	118	78.1	1	0.7	16	10.6	1	0.7	151
	HICKORY	1	2.9	25	73.5	1	2.9	6	17.6	1	2.9	34
	JASPER	97	14	489	70.5	10	1.4	74	10.7	24	3.5	694
	LACLEDE	53	21.3	167	67.1	3	1.2	19	7.6	7	2.8	249
	LAWRENCE	32	12.4	191	74	3	1.2	27	10.5	5	1.9	258
	MCDONALD	28	21.4	92	70.2	4	3.1	3	2.3	4	3.1	131
	MILLER	27	15.8	109	63.7	2	1.2	24	14	9	5.3	171
	MONITEAU	12	14.3	58	69	5	6	5	6	4	4.8	84
	MORGAN	27	27.3	63	63.6	0	0	5	5.1	4	4	99
	NEWTON	43	14.4	219	73.5	5	1.7	18	6	13	4.4	298
	OZARK	5	12.2	28	68.3	0	0	2	4.9	6	14.6	41
	POLK	14	8.1	98	57	9	5.2	40	23.3	11	6.4	172
	ST CLAIR	4	8.3	30	62.5	2	4.2	8	16.7	4	8.3	48
	STONE	37	22.4	107	64.8	8	4.8	7	4.2	6	3.6	165
	TANEY	56	21.1	136	51.1	14	5.3	49	18.4	11	4.1	266
	VERNON	20	15.7	95	74.8	0	0	11	8.7	1	0.8	127
	WEBSTER	15	7.7	168	86.2	1	0.5	11	5.6	0	0	195
	WRIGHT	16	13.6	95	80.5	1	0.8	6	5.1	0	0	118
		REGION TOTAL	963	14	4,988	72.3	126	1.8	619	9	202	2.9
KANSAS CITY	CLAY	26	3.8	569	82.2	24	3.5	58	8.4	15	2.2	692
	JACKSON	318	9.3	2,349	68.9	115	3.4	592	17.4	37	1.1	3,411
	PLATTE	11	4.3	167	66	9	3.6	61	24.1	5	2	253
		REGION TOTAL	355	8.1	3,085	70.8	148	3.4	711	16.3	57	1.3
ST. LOUIS	JEFFERSON	78	7.9	641	64.6	15	1.5	218	22	41	4.1	993
	ST CHARLES	56	7	592	73.6	13	1.6	134	16.7	9	1.1	804
	ST LOUIS COUNTY	300	12.2	1,764	71.9	89	3.6	269	11	32	1.3	2,454
	ST LOUIS CITY	242	16.5	939	64.1	74	5	172	11.7	39	2.7	1,466
		REGION TOTAL	676	11.8	3,936	68.8	191	3.3	793	13.9	121	2.1
STATETOTAL		3,306	12.6	18,546	70.9	613	2.3	3,095	11.8	584	2.2	26,144

Appendix D.

2008 Family Assessment Children by Region, County and Conclusion

REGION	COUNTY	SERVICE NEEDED		SERVICE NOT NEEDED		NON-COOPERATIVE		SERVICE NEEDED- LINKED INITIAL 30 DAYS		SERVICE NEEDED- DECLINED		TOTAL
		Number	%	Number	%	Number	%	Number	%	Number	%	
NORTHWEST	ANDREW	26	21.5	63	52.1	2	1.7	30	24.8	0	0	121
	ATCHISON	3	11.5	18	69.2	0	0	5	19.2	0	0	26
	BUCHANAN	93	10.8	647	75	4	0.5	105	12.2	14	1.6	863
	CALDWELL	4	6.2	46	70.8	3	4.6	11	16.9	1	1.5	65
	CARROLL	8	10	62	77.5	1	1.2	9	11.3	0	0	80
	CASS	50	11.4	288	65.8	3	0.7	92	21	5	1.1	438
	CHARITON	3	7.5	33	82.5	0	0	4	10	0	0	40
	CLINTON	18	17.3	69	66.3	4	3.8	12	11.5	1	1	104
	COOPER	33	20.6	111	69.4	4	2.5	9	5.6	3	1.9	160
	DAVISS	0	0	34	77.3	0	0	10	22.7	0	0	44
	DE KALB	5	7.9	47	74.0	0	0	7	11.1	4	6.3	63
	GENTRY	5	10.9	39	84.8	0	0	2	4.3	0	0	46
	GRUNDY	13	14.3	41	45.1	4	4.4	31	34.1	2	2.2	91
	HARRISON	11	12.2	35	38.9	0	0	43	47.8	1	1.1	90
	HOLT	0	0	18	66.7	0	0	9	33.3	0	0	27
	JOHNSON	25	9.7	202	78.3	9	3.5	22	8.5	0	0	258
	LAFAYETTE	17	6.9	213	85.9	9	3.6	8	3.2	1	0.4	248
	LINN	19	22.1	55	64	0	0	12	14	0	0	86
	LIVINGSTON	10	7.3	108	78.8	2	1.5	15	10.9	2	1.5	137
	MERCER	4	15.4	18	69.2	0	0	4	15.4	0	0	26
	NODAWAY	3	4.4	63	92.6	0	0	2	2.9	0	0	68
PETTIS	40	12.8	243	77.6	1	0.3	18	5.8	11	3.5	313	
PUTNAM	0	0	21	72.4	0	0	8	27.6	0	0	29	
RAY	9	4.8	152	81.3	2	1.1	13	7	11	5.9	187	
SALINE	12	6.1	133	67.9	15	7.7	34	17.3	2	1	196	
SULLIVAN	6	12.5	30	62.5	3	6.3	8	16.7	1	2.1	48	
WORTH	0	0	11	91.7	0	0	1	8.3	0	0	12	
	REGION TOTAL	417	10.8	2,800	72.4	66	1.7	524	13.6	59	1.5	3,866
NORTHEAST	ADAIR	25	11.8	104	49.3	9	4.3	67	31.8	6	2.8	211
	AUDRAIN	15	8.5	133	75.6	2	1.1	18	10.2	8	4.5	176
	BOONE	145	18.3	587	74.2	21	2.7	23	2.9	15	1.9	791
	CALLAWAY	45	13.6	243	73.4	7	2.1	33	10	3	0.9	331
	CLARK	5	11.6	33	76.7	0	0	5	11.6	0	0	43
	COLE	46	10.9	361	85.3	10	2.4	1	0.2	5	1.2	423
	FRANKLIN	86	13.5	458	71.7	5	0.8	72	11.3	18	2.8	639
	GASCONADE	32	21.8	101	68.7	8	5.4	6	4.1	0	0	147
	HOWARD	3	4.8	45	72.6	0	0	9	14.5	5	8.1	62
	KNOX	4	10.3	26	66.7	0	0	8	20.5	1	2.6	39
	LEWIS	2	3	56	83.6	0	0	5	7.5	4	6	67
	LINCOLN	35	10.7	249	75.9	9	2.7	27	8.2	8	2.4	328
	MACON	11	9.8	80	71.4	1	0.9	16	14.3	4	3.6	112
	MARION	65	22.7	180	62.9	5	1.7	30	10.5	6	2.1	286
	MONROE	13	17.6	57	77	0	0	3	4.1	1	1.4	74
	MONTGOMERY	16	17.2	73	78.5	0	0	2	2.2	2	2.2	93
	OSAGE	4	5.6	66	91.7	0	0	2	2.8	0	0	72
	PIKE	19	13.5	101	71.6	3	2.1	13	9.2	5	3.5	141
	RALLS	5	11.4	25	56.8	2	4.5	9	20.5	3	6.8	44
	RANDOLPH	23	10.7	165	77.1	1	0.5	24	11.2	1	0.5	214
	SCHUYLER	6	23.1	13	50	1	3.8	4	15.4	2	7.7	26
SCOTLAND	0	0	5	35.7	0	0	9	64.3	0	0	14	
SHELBY	5	14.3	27	77.1	0	0	3	8.6	0	0	35	
WARREN	47	21.6	111	50.9	7	3.2	38	17.4	15	6.9	218	
	REGION TOTAL	657	14.3	3,299	71.9	91	2	427	9.3	112	2.4	4,586
SOUTHEAST	BOLLINGER	29	27.6	68	64.8	0	0	5	4.8	3	2.9	105
	BUTLER	68	14.2	298	62.3	3	0.6	91	19	18	3.8	478
	CAPE GIRARDEAU	111	21.6	326	63.5	13	2.5	58	11.3	5	1	513
	CARTER	8	22.9	24	68.6	0	0	2	5.7	1	2.9	35
	CRAWFORD	31	14.4	161	74.5	2	0.9	19	8.8	3	1.4	216
	DENT	23	14.8	101	65.2	6	3.9	22	14.2	3	1.9	155
	DUNKLIN	90	25.8	251	71.9	4	1.1	3	0.9	1	0.3	349
	HOWELL	119	34.1	189	54.2	3	0.9	28	8	10	2.9	349
	IRON	16	21.9	42	57.5	1	1.4	14	19.2	0	0	73
	MADISON	8	9.8	61	74.4	0	0	10	12.2	3	3.7	82
	MARIES	16	21.1	58	76.3	0	0	2	2.6	0	0	76
	MISSISSIPPI	22	16.3	110	81.5	0	0	0	0	3	2.2	135
	NEW MADRID	17	12.8	116	87.2	0	0	0	0	0	0	133
	OREGON	24	29.3	51	62.2	1	1.2	5	6.1	1	1.2	82
	PEMISCOT	24	10.7	193	85.8	0	0	2	0.9	6	2.7	225
	PERRY	44	34.4	73	57	0	0	9	7	2	1.6	128
PHELPS	54	18.4	218	74.4	1	0.3	12	4.1	8	2.7	293	

Appendix D. (continued)

2008 Family Assessment Children by Region, County and Conclusion

REGION	COUNTY	SERVICE NEEDED		SERVICE NOT NEEDED		NON-COOPERATIVE		SERVICE NEEDED - LINKED INITIAL 30 DAYS		SERVICE NEEDED - DECLINED		TOTAL
		Number	%	Number	%	Number	%	Number	%	Number	%	
SOUTHEAST	PULASKI	44	14.9	197	66.6	10	3.4	36	12.2	9	3	296
	REYNOLDS	11	16.7	47	71.2	4	6.1	4	6.1	0	0	66
	RIPLEY	21	12.5	86	51.2	4	2.4	32	19	25	14.9	168
	STFRANCOIS	74	14.7	370	73.3	12	2.4	42	8.3	7	1.4	505
	STEGENEVIEVE	7	7	89	89	1	1	3	3	0	0	100
	SCOTT	58	19.7	233	79.3	1	0.3	1	0.3	1	0.3	294
	SHANNON	3	6.7	34	75.6	5	11.1	1	2.2	2	4.4	45
	STODDARD	97	45.3	102	47.7	0	0	10	4.7	5	2.3	214
	TEXAS	40	20.9	119	62.3	0	0	18	9.4	14	7.3	191
	WASHINGTON	12	5.8	169	81.3	2	1	21	10.1	4	1.9	208
	WAYNE	32	25.6	82	65.6	0	0	10	8	1	0.8	125
	REGION TOTAL	1,103	19.6	3,868	68.6	73	1.3	460	8.2	135	2.4	5,639
	SOUTHWEST	BARRY	44	10.9	328	81.6	3	0.7	21	5.2	6	1.5
BARTON		33	30.3	74	67.9	0	0	2	1.8	0	0	109
BATES		12	7.6	121	76.6	4	2.5	16	10.1	5	3.2	158
BENTON		11	16.4	50	74.6	0	0	6	9	0	0	67
CAMDEN		36	12.5	184	64.1	2	0.7	45	15.7	20	7	287
CEDAR		12	8.3	127	87.6	0	0	6	4.1	0	0	145
CHRISTIAN		52	10.7	332	68.6	7	1.4	70	14.5	23	4.8	484
DADE		18	32.7	29	52.7	0	0	7	12.7	1	1.8	55
DALLAS		3	2.5	104	87.4	1	0.8	11	9.2	0	0	119
DOUGLAS		4	5.3	57	76	0	0	9	12	5	6.7	75
GREENE		468	14.3	2,477	75.4	52	1.6	197	6	90	2.7	3,284
HENRY		23	9.9	181	77.7	1	0.4	27	11.6	1	0.4	233
HICKORY		2	3.7	40	74.1	1	1.9	10	18.5	1	1.9	54
JASPER		154	14.9	713	68.9	14	1.4	112	10.8	42	4.1	1,035
LACLEDE		81	23.1	227	64.9	5	1.4	28	8	9	2.6	350
LAWRENCE		43	11.9	275	76.4	6	1.7	31	8.6	5	1.4	360
MCDONALD		39	18.8	153	73.6	5	2.4	4	1.9	7	3.4	208
MILLER		52	19.5	157	59	2	0.8	46	17.3	9	3.4	266
MONITEAU		22	18.5	78	65.5	5	4.2	10	8.4	4	3.4	119
MORGAN		46	29.3	98	62.4	0	0	6	3.8	7	4.5	157
NEWTON		75	15.3	348	71	9	1.8	34	6.9	24	4.9	490
OZARK		12	17.9	44	65.7	0	0	3	4.5	8	11.9	67
POLK		26	9	156	53.8	15	5.2	75	25.9	18	6.2	290
STCLAIR		6	9.1	40	60.6	2	3	10	15.2	8	12.1	66
STONE		58	22.3	160	61.5	12	4.6	19	7.3	11	4.2	260
TANEY		82	20.9	210	53.4	20	5.1	64	16.3	17	4.3	393
VERNON		28	14.6	144	75	0	0	19	9.9	1	0.5	192
WEBSTER		26	8.5	262	85.6	1	0.3	17	5.6	0	0	306
WRIGHT		22	11.5	150	78.5	2	1	17	8.9	0	0	191
REGION TOTAL		1,490	14.6	7,319	71.6	169	1.7	922	9	322	3.2	10,222
KANSAS CITY	CLAY	33	3.6	767	83.1	32	3.5	73	7.9	18	2	923
	JACKSON	525	10.2	3,556	69.3	147	2.9	851	16.6	55	1.1	5,134
	PLATTE	24	6.9	220	62.9	21	6	80	22.9	5	1.4	350
	REGION TOTAL	582	9.1	4,543	70.9	200	3.1	1,004	15.7	78	1.2	6,407
ST. LOUIS	JEFFERSON	112	8	907	64.6	18	1.3	301	21.4	67	4.8	1,405
	ST CHARLES	86	7.8	797	72.5	19	1.7	187	17	11	1	1,100
	ST LOUIS COUNTY	455	13.4	2,391	70.5	127	3.7	370	10.9	48	1.4	3,391
	ST LOUIS CITY	418	18.3	1,440	63.2	106	4.6	252	11.1	64	2.8	2,280
REGION TOTAL	1,071	13.1	5,535	67.7	270	3.3	1,110	13.6	190	2.3	8,176	
STATETOTAL		5,320	13.7	27,364	70.4	869	2.2	4,447	11.4	896	2.3	38,896

Appendix E.

2008 Substantiated Incidents by Region, County and Category of Abuse/Neglect

REGION	COUNTY	PHYSICAL ABUSE		NEGLECT		EMOTIONAL MALTREATMENT	
		Number	%	Number	%	Number	%
NORTHWEST	ANDREW	1	20.0	1	20.0	0	0.0
	BUCHANAN	28	31.8	50	56.8	0	0.0
	CALDWELL	2	33.3	4	66.7	0	0.0
	CARROLL	1	25.0	1	25.0	0	0.0
	CASS	16	47.1	11	32.4	0	0.0
	CHARITON	2	15.4	7	53.9	1	7.7
	CLINTON	5	41.7	6	50.0	2	16.7
	COOPER	2	22.2	2	22.2	1	11.1
	DAVISS	3	50.0	4	66.7	2	33.3
	DE KALB	3	37.5	0	0.0	2	25.0
	GENTRY	1	20.0	4	80.0	0	0.0
	GRUNDY	2	28.6	4	57.1	0	0.0
	HARRISON	0	0.0	2	50.0	0	0.0
	HOLT	2	100.0	0	0.0	0	0.0
	JOHNSON	7	33.3	7	33.3	0	0.0
	LAFAYETTE	6	27.3	14	63.6	2	9.1
	LINN	4	33.3	8	66.7	1	8.3
	LIVINGSTON	6	40.0	4	26.7	0	0.0
	MERCER	0	0.0	2	66.7	0	0.0
	NODAWAY	2	16.7	6	50.0	1	8.3
	PETTIS	13	41.9	10	32.3	2	6.5
PUTNAM	2	40.0	3	60.0	0	0.0	
RAY	3	33.3	1	11.1	0	0.0	
SALINE	9	28.1	13	40.6	1	3.1	
SULLIVAN	1	14.3	5	71.4	0	0.0	
WORTH	0	0.0	1	100.0	0	0.0	
REGION TOTAL	121	32.4	170	45.6	15	4.0	
NORTHEAST	ADAIR	4	44.4	6	66.7	0	0.0
	AUDRAIN	8	24.2	14	42.4	3	9.1
	BOONE	25	39.7	20	31.8	1	1.6
	CALLAWAY	12	52.2	9	39.1	7	30.4
	CLARK	1	33.3	1	33.3	0	0.0
	COLE	6	27.3	9	40.9	0	0.0
	FRANKLIN	18	30.5	24	40.7	1	1.7
	GASCONADE	1	33.3	1	33.3	0	0.0
	HOWARD	1	33.3	1	33.3	0	0.0
	KNOX	0	0.0	0	0.0	1	100.0
	LEWIS	3	42.9	1	14.3	1	14.3
	LINCOLN	24	45.3	23	43.4	10	18.9
	MACON	3	27.3	8	72.7	1	9.1
	MARION	11	55.0	6	30.0	0	0.0
	MONROE	0	0.0	0	0.0	0	0.0
	MONTGOMERY	5	27.8	10	55.6	2	11.1
	PIKE	4	17.4	19	82.6	2	8.7
	RALLS	2	33.3	4	66.7	1	16.7
	RANDOLPH	10	24.4	21	51.2	1	2.4
	SCHUYLER	2	66.7	3	100.0	1	33.3
	SCOTLAND	1	100.0	0	0.0	0	0.0
SHELBY	1	50.0	1	50.0	1	50.0	
WARREN	18	45.0	17	42.5	3	7.5	
REGION TOTAL	160	36.0	198	44.5	36	8.1	
SOUTHEAST	BOLLINGER	3	37.5	2	25.0	1	12.5
	BUTLER	7	14.6	17	35.4	5	10.4
	CAPE GIRARDEAU	12	35.3	12	35.3	1	2.9
	CARTER	2	40.0	0	0.0	0	0.0
	CRAWFORD	7	58.3	4	33.3	0	0.0
	DENT	2	40.0	3	60.0	0	0.0
	DUNKLIN	9	28.1	13	40.6	4	12.5
	HOWELL	18	32.1	33	58.9	2	3.6
	IRON	6	54.6	3	27.3	0	0.0
	MADISON	2	20.0	3	30.0	0	0.0
	MARIES	1	10.0	3	30.0	3	30.0
	MISSISSIPPI	2	25.0	2	25.0	0	0.0
	NEW MADRID	6	50.0	7	58.3	0	0.0
	OREGON	1	50.0	1	50.0	0	0.0
	PEMISCOT	9	30.0	12	40.0	0	0.0
	PERRY	5	27.8	4	22.2	0	0.0
	PHELPS	21	42.0	26	52.0	2	4.0
	PULASKI	24	39.3	39	63.9	11	18.0
	REYNOLDS	0	0.0	1	50.0	0	0.0
	RIPLEY	5	21.7	9	39.1	1	4.4

Appendix E. (continued)

2008 Substantiated Incidents by Region, County and Category of Abuse/Neglect

REGION	COUNTY	MEDICAL NEGLECT		EDUCATIONAL NEGLECT		SEXUAL MALTREATMENT		TOTAL SUBSTAN- TIATED INCIDENTS
		Number	%	Number	%	Number	%	
NORTHWEST	ANDREW	1	20.0	1	20.0	1	20.0	5
	BUCHANAN	2	2.3	1	1.1	17	19.3	88
	CALDWELL	0	0.0	0	0.0	0	0.0	6
	CARROLL	0	0.0	0	0.0	2	50.0	4
	CASS	3	8.8	1	2.9	10	29.4	34
	CHARITON	2	15.4	0	0.0	3	23.1	13
	CLINTON	1	8.3	0	0.0	3	25.0	12
	COOPER	0	0.0	2	22.2	4	44.4	9
	DAVISS	1	16.7	0	0.0	0	0.0	6
	DE KALB	0	0.0	0	0.0	5	62.5	8
	GENTRY	0	0.0	0	0.0	1	20.0	5
	GRUNDY	0	0.0	0	0.0	1	14.3	7
	HARRISON	0	0.0	0	0.0	2	50.0	4
	HOLT	0	0.0	0	0.0	0	0.0	2
	JOHNSON	0	0.0	0	0.0	9	42.9	21
	LAFAYETTE	3	13.6	1	4.6	10	45.5	22
	LINN	0	0.0	0	0.0	1	8.3	12
	LIVINGSTON	0	0.0	0	0.0	7	46.7	15
	MERCER	0	0.0	0	0.0	1	33.3	3
	NODAWAY	0	0.0	0	0.0	7	58.3	12
	PETTIS	1	3.2	0	0.0	11	35.5	31
	PUTNAM	0	0.0	0	0.0	1	20.0	5
	RAY	1	11.1	1	11.1	4	44.4	9
	SALINE	2	6.3	6	18.8	5	15.6	32
SULLIVAN	0	0.0	0	0.0	2	28.6	7	
WORTH	0	0.0	0	0.0	0	0.0	1	
	REGION TOTAL	17	4.6	13	3.5	107	28.7	373
NORTHEAST	ADAIR	0	0.0	0	0.0	1	11.1	9
	AUDRAIN	1	3.0	0	0.0	12	36.4	33
	BOONE	1	1.6	0	0.0	23	36.5	63
	CALLAWAY	2	8.7	0	0.0	2	8.7	23
	CLARK	0	0.0	0	0.0	1	33.3	3
	COLE	2	9.1	0	0.0	8	36.4	22
	FRANKLIN	0	0.0	2	3.4	20	33.9	59
	GASCONADE	0	0.0	0	0.0	2	66.7	3
	HOWARD	0	0.0	0	0.0	1	33.3	3
	KNOX	0	0.0	0	0.0	0	0.0	1
	LEWIS	1	14.3	0	0.0	3	42.9	7
	LINCOLN	1	1.9	0	0.0	13	24.5	53
	MACON	1	9.1	0	0.0	0	0.0	11
	MARION	1	5.0	2	10.0	7	35.0	20
	MONROE	0	0.0	0	0.0	0	0.0	1
	MONTGOMERY	1	5.6	1	5.6	4	22.2	18
	PIKE	2	8.7	0	0.0	2	8.7	23
	RALLS	1	16.7	0	0.0	1	16.7	6
	RANDOLPH	3	7.3	0	0.0	11	26.8	41
	SCHUYLER	0	0.0	0	0.0	1	33.3	3
	SCOTLAND	0	0.0	0	0.0	0	0.0	1
	SHELBY	0	0.0	0	0.0	0	0.0	2
	WARREN	1	2.5	0	0.0	11	27.5	40
		REGION TOTAL	18	4.0	5	1.1	123	27.6
SOUTHEAST	BOLLINGER	0	0.0	0	0.0	3	37.5	8
	BUTLER	0	0.0	0	0.0	21	43.8	48
	CAPE GIRARDEAU	1	2.9	0	0.0	14	41.2	34
	CARTER	0	0.0	0	0.0	3	60.0	5
	CRAWFORD	0	0.0	0	0.0	4	33.3	12
	DENT	0	0.0	0	0.0	1	20.0	5
	DUNKLIN	2	6.3	0	0.0	11	34.4	32
	HOWELL	3	5.4	0	0.0	14	25.0	56
	IRON	0	0.0	0	0.0	3	27.3	11
	MADISON	0	0.0	0	0.0	7	70.0	10
	MARIES	1	10.0	0	0.0	8	80.0	10
	MISSISSIPPI	0	0.0	0	0.0	3	37.5	8
	NEW MADRID	1	8.3	0	0.0	2	16.7	12
	OREGON	0	0.0	0	0.0	0	0.0	2
	PEMISCOT	0	0.0	0	0.0	11	36.7	30
	PERRY	0	0.0	0	0.0	11	61.1	18
	PHELPS	1	2.0	0	0.0	12	24.0	50
	PULASKI	6	9.8	1	1.6	10	16.4	61
	REYNOLDS	0	0.0	0	0.0	2	100.0	2
	RIPLEY	0	0.0	0	0.0	12	52.2	23

Appendix E. (continued)

2008 Substantiated Incidents by Region, County and Category of Abuse/Neglect

REGION	COUNTY	PHYSICAL ABUSE		NEGLECT		EMOTIONAL MALTREATMENT	
		Number	%	Number	%	Number	%
SOUTHEAST	STFRANCOIS	21	36.2	25	43.1	3	5.2
	STEGENEVIEVE	3	25.0	4	33.3	1	8.3
	SCOTT	9	22.5	4	10.0	1	2.5
	SHANNON	1	20.0	2	40.0	0	0.0
	STODDARD	11	26.2	27	64.3	4	9.5
	TEXAS	15	42.9	17	48.6	2	5.7
	WASHINGTON	9	25.0	13	36.1	5	13.9
	WAYNE	1	25.0	3	75.0	0	0.0
	REGION TOTAL	212	31.7	289	43.2	46	6.9
SOUTHWEST	BARRY	14	35.9	16	41.0	0	0.0
	BARTON	7	46.7	8	53.3	1	6.7
	BATES	7	35.0	8	40.0	2	10.0
	BENTON	7	63.6	5	45.5	3	27.3
	CAMDEN	22	52.4	18	42.9	1	2.4
	CEDAR	5	41.7	3	25.0	0	0.0
	CHRISTIAN	12	27.9	13	30.2	3	7.0
	DADE	5	55.6	1	11.1	0	0.0
	DALLAS	8	40.0	7	35.0	0	0.0
	DOUGLAS	2	13.3	6	40.0	0	0.0
	GREENE	54	25.8	99	47.4	19	9.1
	HENRY	4	20.0	5	25.0	0	0.0
	HICKORY	1	16.7	2	33.3	0	0.0
	JASPER	29	34.1	34	40.0	2	2.4
	LACLEDE	19	29.2	31	47.7	2	3.1
	LAWRENCE	12	40.0	13	43.3	2	6.7
	MCDONALD	10	32.3	16	51.6	1	3.2
	MILLER	13	35.1	21	56.8	1	2.7
	MONITEAU	4	30.8	6	46.2	3	23.1
	MORGAN	12	35.3	9	26.5	5	14.7
	NEWTON	21	28.4	41	55.4	7	9.5
	OZARK	2	20.0	4	40.0	2	20.0
	POLK	9	32.1	15	53.6	2	7.1
	STCLAIR	0	0.0	1	33.3	0	0.0
	STONE	7	28.0	9	36.0	0	0.0
	TANEY	23	36.5	31	49.2	2	3.2
	VERNON	3	30.0	5	50.0	0	0.0
	WEBSTER	13	41.9	13	41.9	1	3.2
	WRIGHT	7	30.4	12	52.2	3	13.0
	REGION TOTAL	332	32.5	452	44.2	62	6.1
KANSAS CITY	CLAY	38	31.9	39	32.8	2	1.7
	JACKSON	190	37.0	177	34.5	26	5.1
	PLATTE	18	38.3	16	34.0	3	6.4
	REGION TOTAL	246	36.2	232	34.2	31	4.6
ST. LOUIS	JEFFERSON	49	32.2	74	48.7	6	4.0
	ST CHARLES	49	34.3	64	44.8	11	7.7
	ST LOUIS COUNTY	133	42.9	104	33.6	14	4.5
	ST LOUIS CITY	105	43.6	88	36.5	7	2.9
	REGION TOTAL	336	39.7	330	39.0	38	4.5
OTHER	OUT HOME INV	39	40.6	26	27.1	1	1.0
	REGION TOTAL	39	40.6	26	27.1	1	1.0
STATETOTAL		1,446	35.0	1,697	41.1	229	5.5

Appendix E. (continued)

2008 Substantiated Incidents by Region, County and Category of Abuse/Neglect

REGION	COUNTY	MEDICAL NEGLECT		EDUCATIONAL NEGLECT		SEXUAL MALTREATMENT		TOTAL SUBSTAN- TIATED INCIDENTS
		Number	%	Number	%	Number	%	
SOUTHEAST	ST FRANCOIS	1	1.7	0	0.0	23	39.7	58
	STEGENEVIEVE	0	0.0	0	0.0	5	41.7	12
	SCOTT	0	0.0	0	0.0	28	70.0	40
	SHANNON	0	0.0	0	0.0	2	40.0	5
	STODDARD	3	7.1	0	0.0	8	19.1	42
	TEXAS	5	14.3	0	0.0	10	28.6	35
	WASHINGTON	0	0.0	0	0.0	19	52.8	36
	WAYNE	0	0.0	0	0.0	1	25.0	4
	REGION TOTAL	24	3.6	1	0.2	248	37.1	669
	SOUTHWEST	BARRY	1	2.6	0	0.0	12	30.8
BARTON		1	6.7	1	6.7	2	13.3	15
BATES		0	0.0	0	0.0	10	50.0	20
BENTON		0	0.0	0	0.0	3	27.3	11
CAMDEN		0	0.0	1	2.4	8	19.1	42
CEDAR		0	0.0	0	0.0	3	25.0	12
CHRISTIAN		0	0.0	0	0.0	19	44.2	43
DADE		0	0.0	0	0.0	4	44.4	9
DALLAS		2	10.0	1	5.0	10	50.0	20
DOUGLAS		0	0.0	1	6.7	7	46.7	15
GREENE		10	4.8	2	1.0	66	31.6	209
HENRY		1	5.0	1	5.0	10	50.0	20
HICKORY		0	0.0	0	0.0	3	50.0	6
JASPER		1	1.2	0	0.0	37	43.5	85
LACLEDE		8	12.3	1	1.5	19	29.2	65
LAWRENCE		2	6.7	0	0.0	11	36.7	30
MCDONALD		2	6.5	0	0.0	10	32.3	31
MILLER		4	10.8	3	8.1	9	24.3	37
MONITEAU		0	0.0	0	0.0	8	61.5	13
MORGAN		3	8.8	2	5.9	12	35.3	34
NEWTON		4	5.4	0	0.0	30	40.5	74
OZARK		1	10.0	0	0.0	3	30.0	10
POLK		2	7.1	0	0.0	6	21.4	28
ST CLAIR		0	0.0	0	0.0	2	66.7	3
STONE		0	0.0	0	0.0	11	44.0	25
TANEY		2	3.2	1	1.6	25	39.7	63
VERNON		1	10.0	0	0.0	1	10.0	10
WEBSTER		1	3.2	3	9.7	7	22.6	31
WRIGHT		0	0.0	1	4.4	6	26.1	23
REGION TOTAL		46	4.5	18	1.8	354	34.6	1,023
KANSAS CITY	CLAY	1	0.8	0	0.0	47	39.5	119
	JACKSON	19	3.7	7	1.4	171	33.3	513
	PLATTE	1	2.1	1	2.1	18	38.3	47
	REGION TOTAL	21	3.1	8	1.2	236	34.8	679
ST. LOUIS	JEFFERSON	6	4.0	0	0.0	58	38.2	152
	ST CHARLES	2	1.4	0	0.0	42	29.4	143
	ST LOUIS COUNTY	6	1.9	2	0.7	105	33.9	310
	ST LOUIS CITY	15	6.2	4	1.7	64	26.6	241
	REGION TOTAL	29	3.4	6	0.7	269	31.8	846
OTHER	OUT HOME INV	2	2.1	0	0.0	30	31.3	96
	REGION TOTAL	2	2.1	0	0.0	30	31.3	96
STATE TOTAL		157	3.8	51	1.2	1,367	33.1	4,131

Percent is the percentage of total substantiated incidents. Percent total is greater than 100 because a substantiated incident may be assigned up to six categories of abuse/neglect.

Appendix F.

2008 Substantiated Children by Region, County and Category of Abuse/Neglect

REGION	COUNTY	PHYSICAL ABUSE		NEGLECT		EMOTIONAL MALTREATMENT	
		Number	%	Number	%	Number	%
NORTHWEST	ANDREW	1	16.7	2	33.3	0	0.0
	BUCHANAN	29	22.8	75	59.1	0	0.0
	CALDWELL	2	33.3	4	66.7	0	0.0
	CARROLL	1	25.0	1	25.0	0	0.0
	CASS	16	34.8	14	30.4	0	0.0
	CHARITON	2	7.1	16	57.1	2	7.1
	CLINTON	5	26.3	7	36.8	2	10.5
	COOPER	3	15.0	4	20.0	2	10.0
	DAVIESS	4	28.6	4	28.6	5	35.7
	DE KALB	4	33.3	0	0.0	2	16.7
	GENTRY	1	12.5	6	75.0	0	0.0
	GRUNDY	3	30.0	6	60.0	0	0.0
	HARRISON	0	0.0	8	80.0	0	0.0
	HOLT	4	80.0	0	0.0	0	0.0
	JOHNSON	7	22.6	13	41.9	0	0.0
	LAFAYETTE	7	16.3	18	41.9	2	4.7
	LINN	4	19.1	14	66.7	1	4.8
	LIVINGSTON	7	31.8	8	36.4	0	0.0
	MERCER	0	0.0	3	75.0	0	0.0
	NODAWAY	4	13.8	14	48.3	2	6.9
PETTIS	13	27.7	17	36.2	2	4.3	
PUTNAM	2	33.3	3	50.0	0	0.0	
RAY	3	23.1	4	30.8	0	0.0	
SALINE	11	17.2	31	48.4	4	6.3	
SULLIVAN	1	9.1	8	72.7	0	0.0	
WORTH	0	0.0	1	100.0	0	0.0	
	REGION TOTAL	134	22.1	281	46.3	24	4.0
NORTHEAST	ADAIR	5	33.3	9	60.0	0	0.0
	AUDRAIN	9	17.7	25	49.0	4	7.8
	BOONE	29	33.3	28	32.2	1	1.2
	CALLAWAY	13	31.7	14	34.2	9	22.0
	CLARK	2	33.3	3	50.0	0	0.0
	COLE	6	20.0	12	40.0	0	0.0
	FRANKLIN	27	29.0	41	44.1	1	1.1
	GASCONADE	1	25.0	1	25.0	0	0.0
	HOWARD	1	25.0	2	50.0	0	0.0
	KNOX	0	0.0	0	0.0	3	100.0
	LEWIS	5	45.5	1	9.1	1	9.1
	LINCOLN	25	26.0	40	41.7	17	17.7
	MACON	3	12.5	15	62.5	1	4.2
	MARION	12	34.3	10	28.6	0	0.0
	MONROE	0	0.0	0	0.0	0	0.0
	MONTGOMERY	7	18.9	21	56.8	2	5.4
	PIKE	4	8.3	33	68.8	4	8.3
	RALLS	2	15.4	8	61.5	1	7.7
	RANDOLPH	14	20.6	38	55.9	1	1.5
	SCHUYLER	3	23.1	6	46.2	2	15.4
SCOTLAND	1	100.0	0	0.0	0	0.0	
SHELBY	1	14.3	3	42.9	3	42.9	
WARREN	19	30.2	29	46.0	3	4.8	
	REGION TOTAL	189	25.1	339	45.1	53	7.1
SOUTHEAST	BOLLINGER	3	25.0	5	41.7	1	8.3
	BUTLER	7	9.9	33	46.5	7	9.9
	CAPE GIRARDEAU	17	29.3	25	43.1	1	1.7
	CARTER	2	40.0	0	0.0	0	0.0
	CRAWFORD	8	47.1	5	29.4	0	0.0
	DENT	3	42.9	3	42.9	0	0.0
	DUNKLIN	10	22.2	14	31.1	7	15.6
	HOWELL	26	24.3	58	54.2	4	3.7
	IRON	8	47.1	6	35.3	0	0.0
	MADISON	3	15.0	6	30.0	0	0.0
	MARIES	2	11.1	3	16.7	3	16.7
	MISSISSIPPI	2	16.7	4	33.3	0	0.0
	NEW MADRID	6	30.0	10	50.0	0	0.0
	OREGON	1	50.0	1	50.0	0	0.0
	PEMISCOT	10	25.6	16	41.0	0	0.0
	PERRY	5	21.7	5	21.7	0	0.0
	PHELPS	24	27.3	44	50.0	3	3.4
	PULASKI	26	21.1	56	45.5	18	14.6
	REYNOLDS	0	0.0	3	60.0	0	0.0
	RIPLEY	6	18.2	12	36.4	2	6.1

Appendix F. (continued)

2008 Substantiated Children by Region, County and Category of Abuse/Neglect

REGION	COUNTY	MEDICAL NEGLECT		EDUCATIONAL NEGLECT		SEXUAL MALTREATMENT		TOTAL SUBSTANTIATED CHILDREN
		Number	%	Number	%	Number	%	
NORTHWEST	ANDREW	1	16.7	1	16.7	1	16.7	6
	BUCHANAN	3	2.4	2	1.6	18	14.2	127
	CALDWELL	0	0.0	0	0.0	0	0.0	6
	CARROLL	0	0.0	0	0.0	2	50.0	4
	CASS	3	6.5	1	2.2	11	23.9	46
	CHARITON	3	10.7	0	0.0	3	10.7	28
	CLINTON	1	5.3	0	0.0	4	21.1	19
	COOPER	0	0.0	5	25.0	6	30.0	20
	DAVISS	1	7.1	0	0.0	0	0.0	14
	DE KALB	0	0.0	0	0.0	6	50.0	12
	GENTRY	0	0.0	0	0.0	1	12.5	8
	GRUNDY	0	0.0	0	0.0	1	10.0	10
	HARRISON	0	0.0	0	0.0	2	20.0	10
	HOLT	0	0.0	0	0.0	0	0.0	5
	JOHNSON	0	0.0	0	0.0	10	32.3	31
	LAFAYETTE	3	7.0	2	4.7	11	25.6	43
	LINN	0	0.0	0	0.0	1	4.8	21
	LIVINGSTON	0	0.0	0	0.0	7	31.8	22
	MERCER	0	0.0	0	0.0	1	25.0	4
	NODAWAY	0	0.0	0	0.0	9	31.0	29
	PETIS	1	2.1	0	0.0	14	29.8	47
	PUTNAM	0	0.0	0	0.0	1	16.7	6
	RAY	1	7.7	1	7.7	4	30.8	13
SALINE	2	3.1	11	17.2	5	7.8	64	
SULLIVAN	0	0.0	0	0.0	2	18.2	11	
WORTH	0	0.0	0	0.0	0	0.0	1	
	REGION TOTAL	19	3.1	23	3.8	120	19.8	607
NORTHEAST	ADAIR	0	0.0	0	0.0	1	6.7	15
	AUDRAIN	1	2.0	0	0.0	12	23.5	51
	BOONE	1	1.2	0	0.0	25	28.7	87
	CALLAWAY	2	4.9	0	0.0	3	7.3	41
	CLARK	0	0.0	0	0.0	1	16.7	6
	COLE	2	6.7	0	0.0	10	33.3	30
	FRANKLIN	0	0.0	2	2.2	21	22.6	93
	GASCONADE	0	0.0	0	0.0	2	50.0	4
	HOWARD	0	0.0	0	0.0	1	25.0	4
	KNOX	0	0.0	0	0.0	0	0.0	3
	LEWIS	1	9.1	0	0.0	3	27.3	11
	LINCOLN	1	1.0	0	0.0	13	13.5	96
	MACON	1	4.2	0	0.0	0	0.0	24
	MARION	2	5.7	3	8.6	8	22.9	35
	MONROE	0	0.0	0	0.0	0	0.0	2
	MONTGOMERY	2	5.4	1	2.7	4	10.8	37
	PIKE	2	4.2	0	0.0	2	4.2	48
	RALLS	1	7.7	0	0.0	1	7.7	13
	RANDOLPH	4	5.9	0	0.0	11	16.2	68
	SCHUYLER	0	0.0	0	0.0	2	15.4	13
	SCOTLAND	0	0.0	0	0.0	0	0.0	1
	SHELBY	0	0.0	0	0.0	0	0.0	7
	WARREN	1	1.6	0	0.0	11	17.5	63
	REGION TOTAL	21	2.8	6	0.8	131	17.4	752
SOUTHEAST	BOLLINGER	0	0.0	0	0.0	3	25.0	12
	BUTLER	0	0.0	0	0.0	23	32.4	71
	CAPE GIRARDEAU	1	1.7	0	0.0	14	24.1	58
	CARTER	0	0.0	0	0.0	3	60.0	5
	CRAWFORD	0	0.0	0	0.0	4	23.5	17
	DENT	0	0.0	0	0.0	1	14.3	7
	DUNKLIN	2	4.4	0	0.0	12	26.7	45
	HOWELL	3	2.8	0	0.0	15	14.0	107
	IRON	0	0.0	0	0.0	3	17.7	17
	MADISON	0	0.0	0	0.0	11	55.0	20
	MARIES	1	5.6	0	0.0	9	50.0	18
	MISSISSIPPI	0	0.0	0	0.0	4	33.3	12
	NEW MADRID	1	5.0	0	0.0	3	15.0	20
	OREGON	0	0.0	0	0.0	0	0.0	2
	PEMISCOT	0	0.0	0	0.0	13	33.3	39
	PERRY	0	0.0	0	0.0	13	56.5	23
	PHELPS	1	1.1	0	0.0	15	17.1	88
	PULASKI	8	6.5	1	0.8	11	8.9	123
	REYNOLDS	0	0.0	0	0.0	2	40.0	5
	RIPLEY	0	0.0	0	0.0	13	39.4	33

Appendix F. (continued)

2008 Substantiated Children by Region, County and Category of Abuse/Neglect

REGION	COUNTY	PHYSICAL ABUSE		NEGLECT		EMOTIONAL MALTREATMENT	
		Number	%	Number	%	Number	%
SOUTHEAST	ST FRANCOIS	24	25.0	40	41.7	4	4.2
	STE GENEVIEVE	6	33.3	6	33.3	1	5.6
	SCOTT	11	20.0	10	18.2	1	1.8
	SHANNON	1	20.0	2	40.0	0	0.0
	STODDARD	11	14.9	43	58.1	7	9.5
	TEXAS	16	25.0	28	43.8	2	3.1
	WASHINGTON	9	15.0	20	33.3	7	11.7
	WAYNE	1	10.0	8	80.0	0	0.0
	REGION TOTAL	248	22.5	466	42.2	68	6.2
SOUTHWEST	BARRY	16	26.2	32	52.5	0	0.0
	BARTON	10	26.3	15	39.5	4	10.5
	BATES	10	23.8	17	40.5	4	9.5
	BENTON	9	34.6	8	30.8	5	19.2
	CAMDEN	26	40.0	28	43.1	2	3.1
	CEDAR	5	35.7	4	28.6	0	0.0
	CHRISTIAN	17	24.6	25	36.2	3	4.4
	DADE	6	50.0	1	8.3	0	0.0
	DALLAS	9	24.3	10	27.0	0	0.0
	DOUGLAS	2	10.5	9	47.4	0	0.0
	GREENE	72	20.9	148	42.9	32	9.3
	HENRY	4	13.8	9	31.0	0	0.0
	HICKORY	1	10.0	5	50.0	0	0.0
	JASPER	45	30.6	59	40.1	2	1.4
	LACLEDE	25	21.6	54	46.6	4	3.5
	LAWRENCE	18	30.0	24	40.0	3	5.0
	MCDONALD	11	21.2	26	50.0	2	3.9
	MILLER	14	19.2	37	50.7	1	1.4
	MONITEAU	6	21.4	10	35.7	4	14.3
	MORGAN	14	23.0	22	36.1	7	11.5
	NEWTON	31	20.5	66	43.7	13	8.6
	OZARK	2	12.5	5	31.3	2	12.5
	POLK	9	22.0	22	53.7	2	4.9
	ST CLAIR	0	0.0	1	25.0	0	0.0
	STONE	9	25.0	13	36.1	0	0.0
	TANEY	25	22.1	54	47.8	2	1.8
	VERNON	3	25.0	7	58.3	0	0.0
	WEBSTER	14	24.6	23	40.4	1	1.8
WRIGHT	8	23.5	15	44.1	3	8.8	
REGION TOTAL	421	23.8	749	42.4	96	5.4	
KANSAS CITY	CLAY	44	27.3	56	34.8	2	1.2
	JACKSON	216	27.3	299	37.8	30	3.8
	PLATTE	20	28.2	23	32.4	5	7.0
	REGION TOTAL	280	27.3	378	36.9	37	3.6
ST. LOUIS	JEFFERSON	61	21.8	140	50.0	11	3.9
	ST CHARLES	53	21.8	120	49.4	14	5.8
	ST LOUIS COUNTY	145	32.7	152	34.3	17	3.8
	ST LOUIS CITY	112	29.7	148	39.3	10	2.7
	REGION TOTAL	371	27.6	560	41.7	52	3.9
OTHER	OUT HOME INV	41	30.6	45	33.6	2	1.5
	REGION TOTAL	41	30.6	45	33.6	2	1.5
STATE TOTAL		1,684	25.0	2,818	41.9	332	4.9

Appendix F. (continued)

2008 Substantiated Children by Region, County and Category of Abuse/Neglect

REGION	COUNTY	MEDICAL NEGLECT		EDUCATIONAL NEGLECT		SEXUAL MALTREATMENT		TOTAL SUBSTAN- TIATED CHILDREN
		Number	%	Number	%	Number	%	
SOUTHEAST	ST FRANCOIS	1	1.0	0	0.0	25	26.0	96
	STE GENEVIEVE	0	0.0	0	0.0	5	27.8	18
	SCOTT	0	0.0	0	0.0	33	60.0	55
	SHANNON	0	0.0	0	0.0	2	40.0	5
	STODDARD	4	5.4	0	0.0	8	10.8	74
	TEXAS	5	7.8	0	0.0	12	18.8	64
	WASHINGTON	0	0.0	0	0.0	23	38.3	60
	WAYNE	0	0.0	0	0.0	1	10.0	10
	REGION TOTAL	27	2.5	1	0.1	281	25.5	1,104
	SOUTHWEST	BARRY	1	1.6	0	0.0	12	19.7
BARTON		1	2.6	4	10.5	4	10.5	38
BATES		0	0.0	0	0.0	11	26.2	42
BENTON		0	0.0	0	0.0	4	15.4	26
CAMDEN		0	0.0	1	1.5	8	12.3	65
CEDAR		0	0.0	0	0.0	4	28.6	14
CHRISTIAN		0	0.0	0	0.0	21	30.4	69
DADE		0	0.0	0	0.0	5	41.7	12
DALLAS		2	5.4	2	5.4	12	32.4	37
DOUGLAS		0	0.0	1	5.3	7	36.8	19
GREENE		13	3.8	2	0.6	75	21.7	345
HENRY		1	3.5	2	6.9	12	41.4	29
HICKORY		0	0.0	0	0.0	4	40.0	10
JASPER		1	0.7	0	0.0	40	27.2	147
LACLEDE		9	7.8	1	0.9	22	19.0	116
LAWRENCE		3	5.0	0	0.0	12	20.0	60
MCDONALD		2	3.9	0	0.0	11	21.2	52
MILLER		6	8.2	6	8.2	9	12.3	73
MONITEAU		0	0.0	0	0.0	8	28.6	28
MORGAN		3	4.9	2	3.3	13	21.3	61
NEWTON		7	4.6	0	0.0	34	22.5	151
OZARK		1	6.3	0	0.0	3	18.8	16
POLK		2	4.9	0	0.0	6	14.6	41
ST CLAIR		0	0.0	0	0.0	3	75.0	4
STONE		0	0.0	0	0.0	12	33.3	36
TANEY		2	1.8	1	0.9	29	25.7	113
VERNON		1	8.3	0	0.0	1	8.3	12
WEBSTER		1	1.8	5	8.8	10	17.5	57
WRIGHT		0	0.0	1	2.9	7	20.6	34
REGION TOTAL		56	3.2	28	1.6	399	22.6	1,768
KANSAS CITY	CLAY	1	0.6	0	0.0	53	32.9	161
	JACKSON	26	3.3	12	1.5	188	23.7	792
	PLATTE	1	1.4	1	1.4	19	26.8	71
	REGION TOTAL	28	2.7	13	1.3	260	25.4	1,024
ST. LOUIS	JEFFERSON	6	2.1	0	0.0	62	22.1	280
	ST CHARLES	3	1.2	0	0.0	49	20.2	243
	ST LOUIS COUNTY	8	1.8	4	0.9	114	25.7	443
	ST LOUIS CITY	17	4.5	10	2.7	78	20.7	377
	REGION TOTAL	34	2.5	14	1.0	303	22.6	1,343
OTHER	OUT HOME INV	2	1.5	0	0.0	44	32.8	134
	REGION TOTAL	2	1.5	0	0.0	44	32.8	134
STATE TOTAL		187	2.8	85	1.3	1,538	22.9	6,732

Percent is the percentage of total substantiated children. Percent total is greater than 100 because a child may be found substantiated for up to six categories of abuse/neglect.

Appendix G.

Substantiated Child Abuse/Neglect Fatalities by Year of Death, Region, and County

REGION	COUNTY	2004	2005	2006	2007	2008
NORTHWEST	BUCHANAN	3	1	1	1	1
	CARROLL	0	1	0	0	0
	CASS	0	1	0	1	1
	CLINTON	0	1	0	0	0
	COOPER	0	0	1	0	0
	DAVISS	0	0	1	0	0
	GRUNDY	0	0	1	0	0
	JOHNSON	0	0	0	2	0
	NODAWAY	1	0	0	0	0
	PETTIS	0	0	0	0	0
	RAY	0	0	0	0	0
	SALINE	0	0	0	0	0
	SULLIVAN	0	0	1	0	0
	REGION TOTAL	4	4	5	4	2
NORTHEAST	AUDRAIN	0	0	0	0	0
	BOONE	0	1	0	0	1
	CALLAWAY	0	0	0	0	0
	COLE	0	0	0	1	0
	FRANKLIN	0	0	0	0	0
	GASCONADE	0	0	0	1	0
	HOWARD	0	0	0	1	0
	LEWIS	0	0	1	0	0
	LINCOLN	1	0	1	0	1
	MONROE	0	0	0	0	0
	OSAGE	0	0	0	0	0
	PIKE	0	0	0	1	0
	RALLS	0	0	0	1	0
	RANDOLPH	1	0	0	0	0
	WARREN	1	0	1	0	0
REGION TOTAL	3	1	3	5	2	
SOUTHEAST	BUTLER	0	2	0	0	0
	CAPE GIRARDEAU	0	0	0	0	0
	DUNKLIN	0	1	0	0	0
	HOWELL	2	0	1	0	0
	IRON	0	0	0	0	0
	MISSISSIPPI	1	0	0	0	0
	NEW MADRID	0	0	0	0	1
	PHELPS	0	0	1	0	1
	PULASKI	1	2	0	0	1
	REYNOLDS	0	0	0	1	0
	ST. FRANCOIS	0	1	0	1	0
	STE. GENEVIEVE	0	0	0	0	0
	SCOTT	0	0	1	0	0
	SHANNON	0	0	0	1	0
	STODDARD	0	1	0	0	0
	TEXAS	0	1	0	0	2
WASHINGTON	0	0	1	0	0	
REGION TOTAL	4	8	4	3	5	
SOUTHWEST	BARTON	0	1	0	0	0
	BATES	0	0	0	0	0
	CAMDEN	2	0	1	2	0
	CEDAR	0	0	0	0	0
	CHRISTIAN	0	1	0	0	0
	DOUGLAS	0	0	0	1	0
	GREENE	4	5	2	1	0
	HENRY	0	0	0	0	0
	JASPER	0	0	0	0	1
	LACLEDE	0	0	1	2	0
	LAWRENCE	0	0	0	0	0
	MCDONALD	0	0	0	1	0
	MILLER	1	0	1	2	1
	NEWTON	0	0	0	3	1
	OZARK	0	0	0	0	0
	STONE	1	0	0	0	0
	TANEY	3	1	0	1	1
	VERNON	0	0	0	0	0
	WEBSTER	0	0	0	0	1
	WRIGHT	0	0	0	0	0
REGION TOTAL	11	8	5	13	5	

Appendix G. (continued)**Substantiated Child Abuse/Neglect Fatalities by Year of Death, Region, and County**

REGION	COUNTY	2004	2005	2006	2007	2008
KANSAS CITY	CLAY	0	1	2	2	1
	JACKSON	8	3	6	4	7
	PLATTE	1	0	0	1	0
	REGION TOTAL	9	4	8	7	8
ST. LOUIS	JEFFERSON	2	2	0	2	3
	ST. CHARLES	0	1	0	1	0
	ST. LOUIS COUNTY	4	2	0	8	2
	ST. LOUIS CITY	4	1	2	3	2
	REGION TOTAL	10	6	2	14	7
OTHER	AREA OFFICE	0	0	0	0	0
	OUT HOME INV	1	1	0	0	1
	REGION TOTAL	1	1	0	0	1
STATETOTAL		42	32	27	46	30